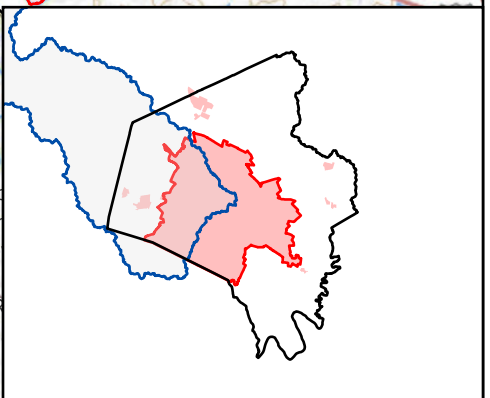







USGS The National Map
Program, Geographic Name
Dataset, National Land Co
National Transportation
Bureau TIGER/Line data; USFS R
of State HIU; NOAA N
Lexington-Fayette Urban



Legend:

-  Urban Service Boundary
-  Permit-Defined Urban Area
-  Fayette County Boundary
-  Watershed Boundary
-  Monitoring Site



Lexington-Fayette Urban
County Government
Stream Monitoring Program
Sampling Route E



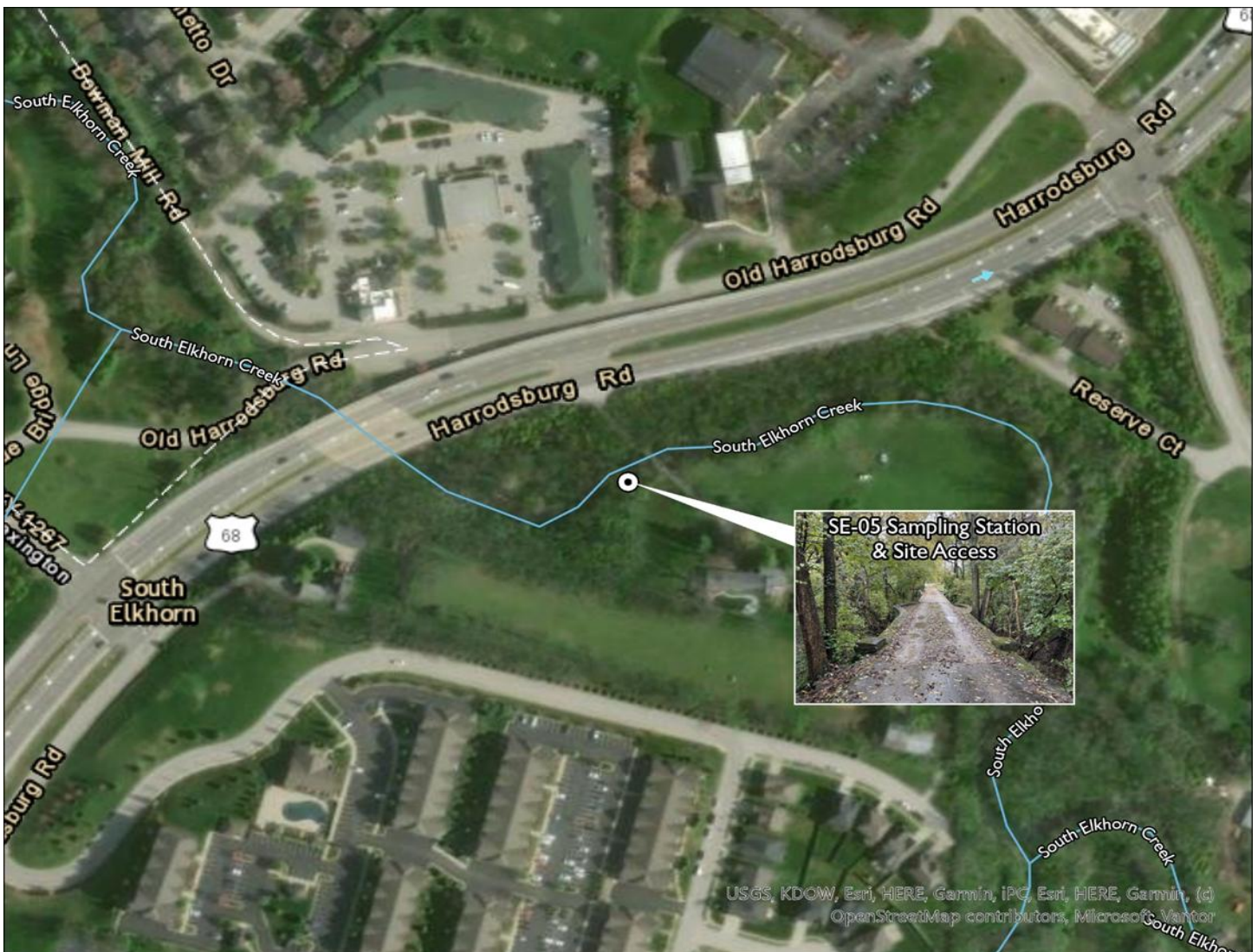
LEXINGTON

MS4 Stream Monitoring Program Volunteer Sampling Guide - Route E

Site: SE-05 Stream: South Elkhorn Creek Watershed: South Elkhorn Creek

Coordinates: Parking Lat: 37.99590 Long: -84.58429 Sampling Lat: 37.99551 Long: -84.58414

Enter "Parking" Lat and Long into Google Maps to generate driving directions. Park at the entrance to 4350 Harrodsburg Road. From there, walk down the paved driveway and enter the wooded area. Go down the stream bank on either side of the driveway before the stone bridge. Collect sample under the bridge.



If you have trouble accessing the site or collecting the sample, contact Ryan McGregor, Water Quality Sampling Lead, at (859) 977-2000 or (270) 206-5676. In his absence, contact Mac Hall, Data Manager at (859) 977-2000 or (859) 612-2434. A PDF copy of this guide, route KMZ, original image inserts, and other volunteer resources are available from thirdrockconsultants.com/LFUCG-volunteer-links.



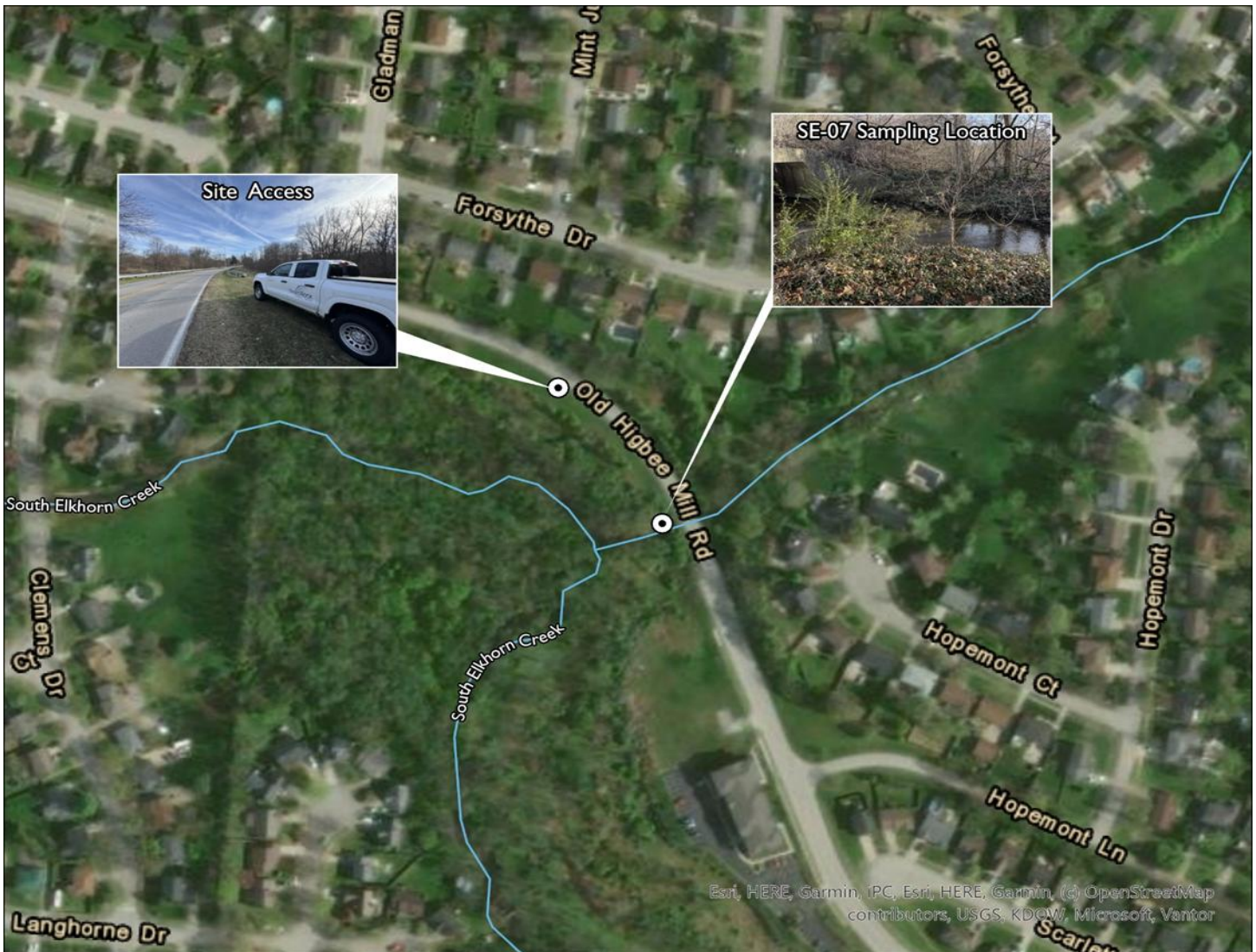
LEXINGTON

MS4 Stream Monitoring Program Volunteer Sampling Guide - Route E

Site: SE-07 Stream: UNT to South Elkhorn Creek Watershed: South Elkhorn Creek

Coordinates: Parking Lat: 37.99331 Long: -84.57420 Sampling Lat: 37.99268 Long: -84.57363

Enter "Parking" Lat and Long into Google Maps to generate driving directions. Park on the side of Old Higbee Mill Road before the guardrail begins. From there, walk along the mowed grass behind the guardrail until you reach the wooded area. The stream is approximately 50 feet into the wooded area.



If you have trouble accessing the site or collecting the sample, contact Ryan McGregor, Water Quality Sampling Lead, at (859) 977-2000 or (270) 206-5676. In his absence, contact Mac Hall, Data Manager at (859) 977-2000 or (859) 612-2434. A PDF copy of this guide, route KMZ, original image inserts, and other volunteer resources are available from thirdrockconsultants.com/LFUCG-volunteer-links.



LEXINGTON

MS4 Stream Monitoring Program Volunteer Sampling Guide - Route E

Site: SE-08 Stream: South Elkhorn Creek Watershed: South Elkhorn Creek

Coordinates: Parking Lat: 37.99052 Long: -84.57228 Sampling Lat: 37.99019 Long: -84.57269

Enter "Parking" Lat and Long into Google Maps to generate driving directions. Park on Old Higbee Road behind 1444 Scarlett Way. From there, walk down the mowed grass path along the edge of the wooded area. Take a left into the woods and walk down to the stream.



If you have trouble accessing the site or collecting the sample, contact Ryan McGregor, Water Quality Sampling Lead, at (859) 977-2000 or (270) 206-5676. In his absence, contact Mac Hall, Data Manager at (859) 977-2000 or (859) 612-2434. A PDF copy of this guide, route KMZ, original image inserts, and other volunteer resources are available from thirdrockconsultants.com/LFUCG-volunteer-links.



LEXINGTON

MS4 Stream Monitoring Program Volunteer Sampling Guide - Route E

Site: SE-12 Stream: South Elkhorn Creek Watershed: South Elkhorn Creek

Coordinates: Parking Lat: 37.98834 Long: -84.54455 Sampling Lat: 37.98841 Long: -84.54459

Enter "Parking" Lat and Long into Google Maps to generate driving directions. Park near the bridge on Halifax Drive. From there, walk down either side of the bridge to the stream.



If you have trouble accessing the site or collecting the sample, contact Ryan McGregor, Water Quality Sampling Lead, at (859) 977-2000 or (270) 206-5676. In his absence, contact Mac Hall, Data Manager at (859) 977-2000 or (859) 612-2434. A PDF copy of this guide, route KMZ, original image inserts, and other volunteer resources are available from thirdrockconsultants.com/LFUCG-volunteer-links.



LEXINGTON

MS4 Stream Monitoring Program Volunteer Sampling Guide - Route E

Site: SE-13 Stream: UNT to South Elkhorn Creek Watershed: South Elkhorn Creek

Coordinates: Parking Lat: 38.00063 Long: -84.53201 Sampling Lat: 38.00101 Long: -84.53176

Enter "Parking" Lat and Long into Google Maps to generate driving directions. Park at the corner of the parking lot at 601 Stone Road. From there, walk across the road towards the mowed grass and bench seat. Go past the bench and you will reach the stream.



If you have trouble accessing the site or collecting the sample, contact Ryan McGregor, Water Quality Sampling Lead, at (859) 977-2000 or (270) 206-5676. In his absence, contact Mac Hall, Data Manager at (859) 977-2000 or (859) 612-2434. A PDF copy of this guide, route KMZ, original image inserts, and other volunteer resources are available from thirdrockconsultants.com/LFUCG-volunteer-links.