

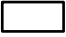




USGS The National Map
Program, Geographic Name
Dataset, National Land Co
National Transportation
Bureau TIGER/Line data; USFS
of State HIU; NOAA N



Legend

-  Urban Service Boundary
-  Permit-Defined Urban Area
-  Fayette County Boundary
-  Watershed Boundary
-  Monitoring Site

Lexington-Fayette Urban
County Government
Stream Monitoring Program
Sampling Route H



LEXINGTON

MS4 Stream Monitoring Program Volunteer Sampling Guide - Route H

Site: TB-02 Stream: UNT to Town Branch Watershed: Town Branch

Coordinates: Parking Lat: 38.09732 Long: -84.56617 Sampling Lat: 38.09758 Long: -84.56628

Enter "Parking" Lat and Long into Google Maps to generate driving directions. Park on Bracktown Road, just off of Leestown Road. From there, walk along the gravel path off of Bracktown Road to an abandoned bridge. Collect sample below the abandoned bridge.



If you have trouble accessing the site or collecting the sample, contact Ryan McGregor, Water Quality Sampling Lead, at (859) 977-2000 or (270) 206-5676. In his absence, contact Mac Hall, Data Manager at (859) 977-2000 or (859) 612-2434. A PDF copy of this guide, route KMZ, original image inserts, and other volunteer resources are available from thirdrockconsultants.com/LFUCG-volunteer-links.



LEXINGTON

MS4 Stream Monitoring Program Volunteer Sampling Guide - Route H

Site: TB-03 Stream: UNT to Town Branch Watershed: Town Branch

Coordinates: Parking Lat: 38.09133 Long: -84.55697 Sampling Lat: 38.09162 Long: -84.55732

Enter "Parking" Lat and Long into Google Maps to generate driving directions. Park on Ruffian Way just inside of Masterson Station Park. The stream is visible from the parking location on Ruffian Way. Walk across the road and down directly to the stream, collect sample downstream of the bridge.



If you have trouble accessing the site or collecting the sample, contact Ryan McGregor, Water Quality Sampling Lead, at (859) 977-2000 or (270) 206-5676. In his absence, contact Mac Hall, Data Manager at (859) 977-2000 or (859) 612-2434. A PDF copy of this guide, route KMZ, original image inserts, and other volunteer resources are available from thirdrockconsultants.com/LFUCG-volunteer-links.



LEXINGTON

MS4 Stream Monitoring Program Volunteer Sampling Guide - Route H

Site: TB-05 Stream: UNT to Town Branch Watershed: Town Branch

Coordinates: Parking Lat: 38.08900 Long: -84.54120 Sampling Lat: 38.08784 Long: -84.54008

Enter "Parking" Lat and Long into Google Maps to generate driving directions. Park at 2696 Mable Lane. From there, walk down the paved path between fences to the "T" intersection. Take a left at the "T" and follow the path underneath a bridge crossing the stream. Collect sample below the bridge.



If you have trouble accessing the site or collecting the sample, contact Ryan McGregor, Water Quality Sampling Lead, at (859) 977-2000 or (270) 206-5676. In his absence, contact Mac Hall, Data Manager at (859) 977-2000 or (859) 612-2434. A PDF copy of this guide, route KMZ, original image inserts, and other volunteer resources are available from thirdrockconsultants.com/LFUCG-volunteer-links.



LEXINGTON

MS4 Stream Monitoring Program Volunteer Sampling Guide - Route H

Site: TB-06 Stream: Town Branch Watershed: Town Branch

Coordinates: Parking Lat: 38.07461 Long: -84.55296 Sampling Lat: 38.07461 Long: -84.55241

Enter "Parking" Lat and Long into Google Maps to generate driving directions. Park at Alexandria Drive near the bridge and railroad crossing. From there, walk in the grass on the side of Alexandria Drive towards the bridge. Before the bridge take a right into the wooded area at the orange flagging descend down into the stream by following orange flagging.



If you have trouble accessing the site or collecting the sample, contact Ryan McGregor, Water Quality Sampling Lead, at (859) 977-2000 or (270) 206-5676. In his absence, contact Mac Hall, Data Manager at (859) 977-2000 or (859) 612-2434. A PDF copy of this guide, route KMZ, original image inserts, and other volunteer resources are available from thirdrockconsultants.com/LFUCG-volunteer-links.



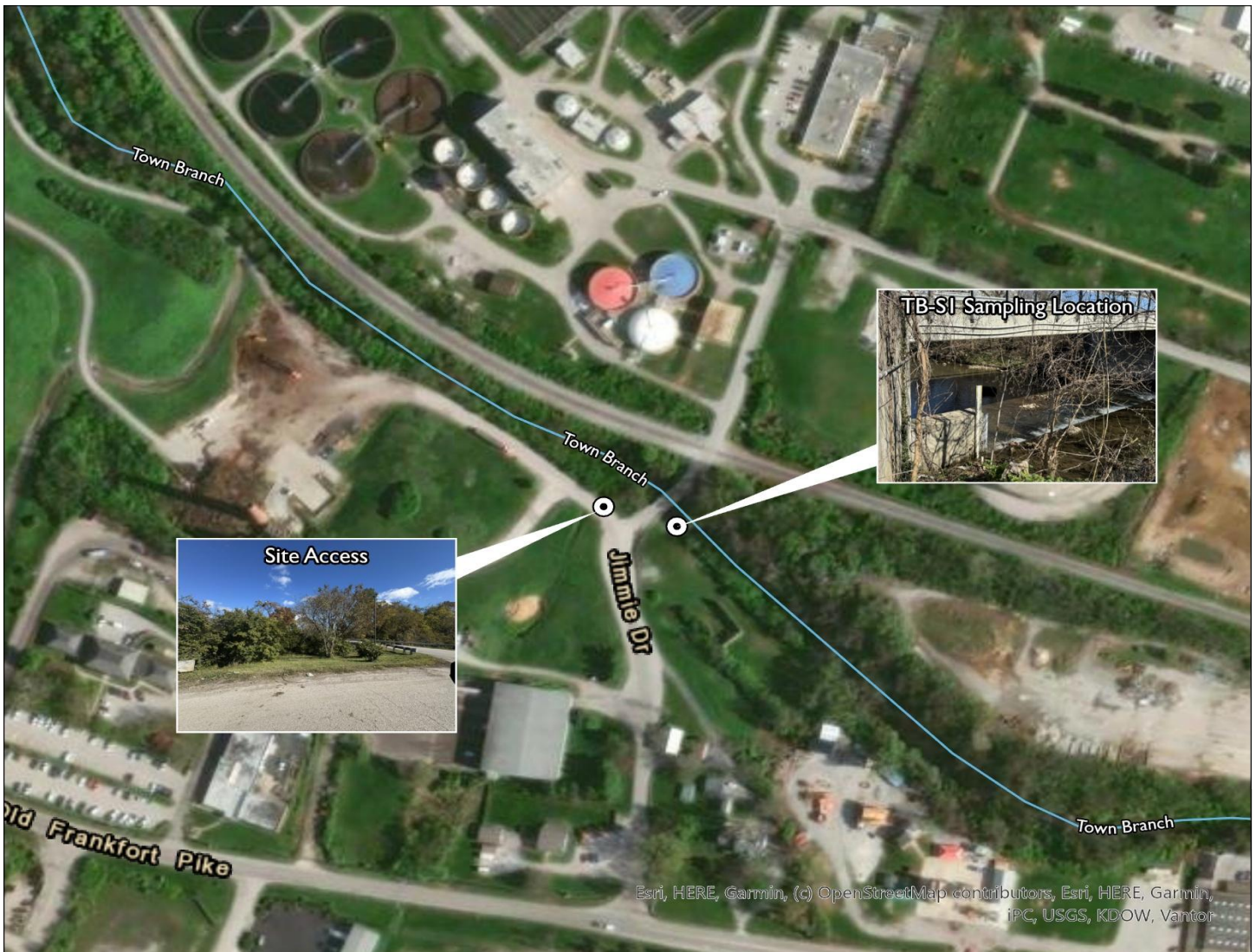
LEXINGTON

MS4 Stream Monitoring Program Volunteer Sampling Guide - Route H

Site: TB-S1 Stream: Town Branch Watershed: Town Branch

Coordinates: Parking Lat: 38.06007 Long: -84.53022 Sampling Lat: 38.06002 Long: -84.52991

Enter "Parking" Lat and Long into Google Maps to generate driving directions. Park on Jimmie Campbell Drive near the bridge. From there, walk across Jimmie Campbell Drive, step over the guard rail, walk to the left down to the stream.



If you have trouble accessing the site or collecting the sample, contact Ryan McGregor, Water Quality Sampling Lead, at (859) 977-2000 or (270) 206-5676. In his absence, contact Mac Hall, Data Manager at (859) 977-2000 or (859) 612-2434. A PDF copy of this guide, route KMZ, original image inserts, and other volunteer resources are available from thirdrockconsultants.com/LFUCG-volunteer-links.