

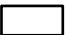




USGS The National Map
Program, Geographic Name
Dataset, National Land Co
National Transportation
Bureau TIGER/Line data; USFS P
of State HIU; NOAA N
Lexington-Fayette Urban

Legend:

-  Urban Service Boundary
-  Permit-Defined Urban Area
-  Fayette County Boundary
-  Watershed Boundary
-  Monitoring Site



Lexington-Fayette Urban
County Government
Stream Monitoring Program
Sampling Route B



LEXINGTON

MS4 Stream Monitoring Program Volunteer Sampling Guide - Route B

Site: BC-02 Stream: UNT to Baughman Fork Watershed: Boone Creek

Coordinates: Parking Lat: 37.96574 Long: -84.36351 Sampling Lat: 37.96678 Long: -84.36277

Enter "Parking" Lat and Long into Google Maps to generate driving directions. Park at the base of the split entry driveway near the stone pillars on N. Cleveland Drive. From there, walk across the road, take a right, and proceed north along N. Cleveland Drive until you reach the stream.



If you have trouble accessing the site or collecting the sample, contact Ryan McGregor, Water Quality Sampling Lead, at (859) 977-2000 or (270) 206-5676. In his absence, contact Mac Hall, Data Manager at (859) 977-2000 or (859) 612-2434. A PDF copy of this guide, route KMZ, original image inserts, and other volunteer resources are available from thirdrockconsultants.com/LFUCG-volunteer-links.



LEXINGTON

MS4 Stream Monitoring Program Volunteer Sampling Guide - Route B

Site: EH-02 Stream: East Hickman Creek Watershed: East Hickman Creek

Coordinates: Parking Lat: 37.94780 Long: -84.45440 Sampling Lat: 37.94786 Long: -84.45440

Enter "Parking" Lat and Long into Google Maps to generate driving directions. Go to 2525 DeLong Road and pull up to the Overbrook Farm gate and the gate will open. Go through the gate and park near the bridge. Walk down the mowed grass to sample East Hickman Creek downstream of the bridge. Please note that coordination with Overbrook Farm is necessary if sampling outside of normal business hours.



If you have trouble accessing the site or collecting the sample, contact Ryan McGregor, Water Quality Sampling Lead, at (859) 977-2000 or (270) 206-5676. In his absence, contact Mac Hall, Data Manager at (859) 977-2000 or (859) 612-2434. A PDF copy of this guide, route KMZ, original image inserts, and other volunteer resources are available from thirdrockconsultants.com/LFUCG-volunteer-links.



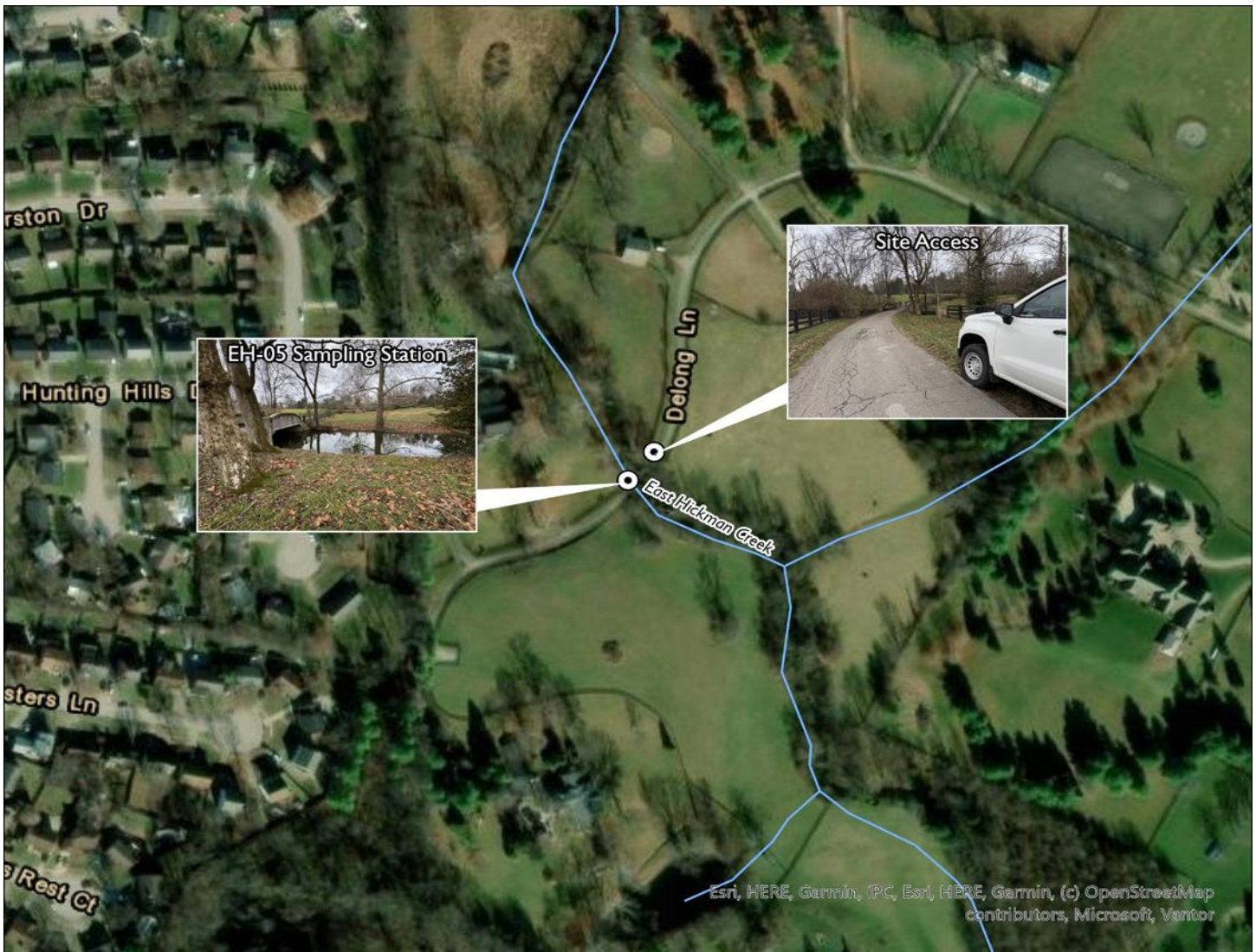
LEXINGTON

MS4 Stream Monitoring Program Volunteer Sampling Guide - Route B

Site: EH-05 Stream: East Hickman Creek Watershed: East Hickman Creek

Coordinates: Parking Lat: 37.97305 Long: -84.45168 Sampling Lat: 37.97293 Long: -84.45182

Enter "Parking" Lat and Long into Google Maps to generate driving directions. Park next to the bridge near 1111 Delong Lane. From there, walk under the bridge to sample East Hickman Creek.



If you have trouble accessing the site or collecting the sample, contact Ryan McGregor, Water Quality Sampling Lead, at (859) 977-2000 or (270) 206-5676. In his absence, contact Mac Hall, Data Manager at (859) 977-2000 or (859) 612-2434. A PDF copy of this guide, route KMZ, original image inserts, and other volunteer resources are available from thirdrockconsultants.com/LFUCG-volunteer-links.



LEXINGTON

MS4 Stream Monitoring Program Volunteer Sampling Guide - Route B

Site: EH-13 Stream: UNT to East Hickman Creek Watershed: East Hickman Creek

Coordinates: Parking Lat: 37.97051 Long: -84.40298 Sampling Lat: 37.97056 Long: -84.40324

Enter "Parking" Lat and Long into Google Maps to generate driving directions. Park at the dead end of a private drive off of Athens-Boonesboro Road. The private drive dead ends at the stream. You may walk on either bank of the stream, which is just past the end of the private drive.



If you have trouble accessing the site or collecting the sample, contact Ryan McGregor, Water Quality Sampling Lead, at (859) 977-2000 or (270) 206-5676. In his absence, contact Mac Hall, Data Manager at (859) 977-2000 or (859) 612-2434. A PDF copy of this guide, route KMZ, original image inserts, and other volunteer resources are available from thirdrockconsultants.com/LFUCG-volunteer-links.