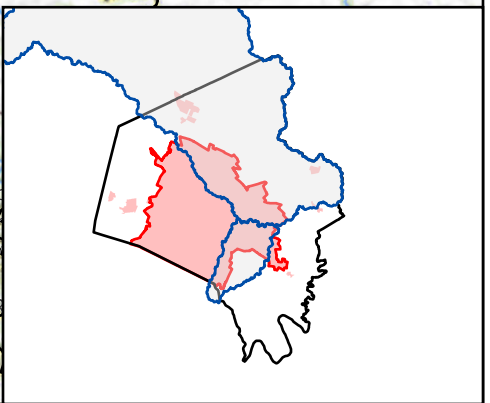


USGS The National Map  
 Program, Geographic Name  
 Dataset, National Land Co  
 National Transportation  
 Bureau TIGER/Line data; USFS B  
 of State HIU; NOAA N  
 Lexington-Fayette Urban



**Legend:**

- Urban Service Boundary
- Permit-Defined Urban Area
- Fayette County Boundary
- Watershed Boundary
- Monitoring Site



Lexington-Fayette Urban  
 County Government  
 Stream Monitoring Program  
 Sampling Route C



# LEXINGTON

## MS4 Stream Monitoring Program Volunteer Sampling Guide - Route C

Site: EH-09 Stream: UNT to East Hickman Creek Watershed: East Hickman Creek

Coordinates: Parking Lat: 37.99780 Long: -84.42174 Sampling Lat: 37.99754 Long: -84.42208

Enter "Parking" Lat and Long into Google Maps to generate driving directions. Park just past the gate of Andover Estates entrance on Gingermill Lane. From there, walk along the sidewalk until you reach a cart path. Walk down the cart path and you will see the stream on the right of the cart path toward the trees.



If you have trouble accessing the site or collecting the sample, contact Ryan McGregor, Water Quality Sampling Lead, at (859) 977-2000 or (270) 206-5676. In his absence, contact Mac Hall, Data Manager at (859) 977-2000 or (859) 612-2434. A PDF copy of this guide, route KMZ, original image inserts, and other volunteer resources are available from [thirdrockconsultants.com/LFUCG-volunteer-links](http://thirdrockconsultants.com/LFUCG-volunteer-links).



# LEXINGTON

## MS4 Stream Monitoring Program Volunteer Sampling Guide - Route C

Site: EH-10 / EH-S10 Stream: UNT to East Hickman Creek Watershed: East Hickman Creek

Coordinates: Parking Lat: 37.98867 Long: -84.41080 Sampling Lat: 37.98851 Long: -84.41094

Enter "Parking" Lat and Long into Google Maps to generate driving directions. Park on the side of Chilesburg Road between the bridge and Still Meadow Lane. From there, walk along the mowed grass towards the USGS sign. The stream is behind the USGS sign.



If you have trouble accessing the site or collecting the sample, contact Ryan McGregor, Water Quality Sampling Lead, at (859) 977-2000 or (270) 206-5676. In his absence, contact Mac Hall, Data Manager at (859) 977-2000 or (859) 612-2434. A PDF copy of this guide, route KMZ, original image inserts, and other volunteer resources are available from [thirdrockconsultants.com/LFUCG-volunteer-links](http://thirdrockconsultants.com/LFUCG-volunteer-links).



# LEXINGTON

## MS4 Stream Monitoring Program Volunteer Sampling Guide - Route C

Site: EH-11 Stream: UNT to East Hickman Creek Watershed: East Hickman Creek

Coordinates: Parking Lat: 37.99681 Long: -84.41213 Sampling Lat: 37.99693 Long: -84.41189

Enter "Parking" Lat and Long into Google Maps to generate driving directions. Park on the side of Andover Village Drive across from Mint Hill Lane. From there, walk down the mowed grass towards a black fence that is across from the intersection of Mint Hill Lane and Andover Village Drive. Go around the black fence and you will arrive at the stream.



If you have trouble accessing the site or collecting the sample, contact Ryan McGregor, Water Quality Sampling Lead, at (859) 977-2000 or (270) 206-5676. In his absence, contact Mac Hall, Data Manager at (859) 977-2000 or (859) 612-2434. A PDF copy of this guide, route KMZ, original image inserts, and other volunteer resources are available from [thirdrockconsultants.com/LFUCG-volunteer-links](http://thirdrockconsultants.com/LFUCG-volunteer-links).



# LEXINGTON

## MS4 Stream Monitoring Program Volunteer Sampling Guide - Route C

Site: NE-02 Stream: David Fork Watershed: North Elkhorn Creek

Coordinates: Parking Lat: 38.05107 Long: -84.38172 Sampling Lat: 38.05154 Long: -84.38231

Enter "Parking" Lat and Long into Google Maps to generate driving directions. Park on the side of Royster Road near the bridge over David's Fork. From there, walk along the mowed side of the road with a black wooden fence towards the bridge until you reach the stream.



If you have trouble accessing the site or collecting the sample, contact Ryan McGregor, Water Quality Sampling Lead, at (859) 977-2000 or (270) 206-5676. In his absence, contact Mac Hall, Data Manager at (859) 977-2000 or (859) 612-2434. A PDF copy of this guide, route KMZ, original image inserts, and other volunteer resources are available from [thirdrockconsultants.com/LFUCG-volunteer-links](http://thirdrockconsultants.com/LFUCG-volunteer-links).



# LEXINGTON

## MS4 Stream Monitoring Program Volunteer Sampling Guide - Route C

Site: NE-11 Stream: North Elkhorn Creek Watershed: North Elkhorn Creek

Coordinates: Parking Lat: 38.02804 Long: -84.40245 Sampling Lat: 38.02864 Long: -84.40176

Enter "Parking" Lat and Long into Google Maps to generate driving directions. Park on Man-O-War across from the Avery Apartments. From there, walk down the mowed hill behind the guardrail towards a telephone pole. The stream is located at the bottom of the hill just past the telephone pole.



If you have trouble accessing the site or collecting the sample, contact Ryan McGregor, Water Quality Sampling Lead, at (859) 977-2000 or (270) 206-5676. In his absence, contact Mac Hall, Data Manager at (859) 977-2000 or (859) 612-2434. A PDF copy of this guide, route KMZ, original image inserts, and other volunteer resources are available from [thirdrockconsultants.com/LFUCG-volunteer-links](http://thirdrockconsultants.com/LFUCG-volunteer-links).