
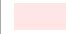





**Legend:**

-  Urban Service Boundary
-  Permit-Defined Urban Area
-  Fayette County Boundary
-  Watershed Boundary
-  Monitoring Site

Lexington-Fayette Urban  
County Government  
Stream Monitoring Program  
Sampling Route D



USGS The National Map  
Program, Geographic Name  
Dataset, National Land Co  
National Transportation  
Bureau TIGER/Line data; USFS P  
of State HIU; NOAA N  
Lexington-Fayette Urban Cnty



# LEXINGTON

## MS4 Stream Monitoring Program Volunteer Sampling Guide - Route D

Site: NE-01 Stream: North Elkhorn Creek Watershed: North Elkhorn Creek

Coordinates: Parking Lat: 38.08424 Long: -84.40657 Sampling Lat: 38.08438 Long: -84.40567

Enter "Parking" Lat and Long into Google Maps to generate driving directions. Park on the side of KY-3367 near the south side of the bridge just past a gate in the black fence. From there, walk through the gate and towards the stream walk 50m away from the road to sample point.



If you have trouble accessing the site or collecting the sample, contact Ryan McGregor, Water Quality Sampling Lead, at (859) 977-2000 or (270) 206-5676. In his absence, contact Mac Hall, Data Manager at (859) 977-2000 or (859) 612-2434. A PDF copy of this guide, route KMZ, original image inserts, and other volunteer resources are available from [thirdrockconsultants.com/LFUCG-volunteer-links](http://thirdrockconsultants.com/LFUCG-volunteer-links).



# LEXINGTON

## MS4 Stream Monitoring Program Volunteer Sampling Guide - Route D

Site: NE-03 Stream: UNT to North Elkhorn Creek Watershed: North Elkhorn Creek

Coordinates: Parking Lat: 38.05848 Long: -84.43051 Sampling Lat: 38.05849 Long: -84.43004

Enter "Parking" Lat and Long into Google Maps to generate driving directions. Park at Kentucky American Water gate with pull off parking spot. From there walk across the road and to the right towards orange flagging, then walk into the wooded area to the stream just inside the wooded area.



If you have trouble accessing the site or collecting the sample, contact Ryan McGregor, Water Quality Sampling Lead, at (859) 977-2000 or (270) 206-5676. In his absence, contact Mac Hall, Data Manager at (859) 977-2000 or (859) 612-2434. A PDF copy of this guide, route KMZ, original image inserts, and other volunteer resources are available from [thirdrockconsultants.com/LFUCG-volunteer-links](http://thirdrockconsultants.com/LFUCG-volunteer-links).



# LEXINGTON

## MS4 Stream Monitoring Program Volunteer Sampling Guide - Route D

Site: NE-04 Stream: UNT to North Elkhorn Creek Watershed: North Elkhorn Creek

Coordinates: Parking Lat: 38.04554 Long: -84.42398 Sampling Lat: 38.04595 Long: -84.42398

Enter "Parking" Lat and Long into Google Maps to generate driving directions. Park at the back corner of the Best Western Hotel located at 2221 Elkhorn Road. From there, you will walk next to the dumpster, going downhill to the stream, once at the stream walk to the right for 50m to sample station.



If you have trouble accessing the site or collecting the sample, contact Ryan McGregor, Water Quality Sampling Lead, at (859) 977-2000 or (270) 206-5676. In his absence, contact Mac Hall, Data Manager at (859) 977-2000 or (859) 612-2434. A PDF copy of this guide, route KMZ, original image inserts, and other volunteer resources are available from [thirdrockconsultants.com/LFUCG-volunteer-links](http://thirdrockconsultants.com/LFUCG-volunteer-links).



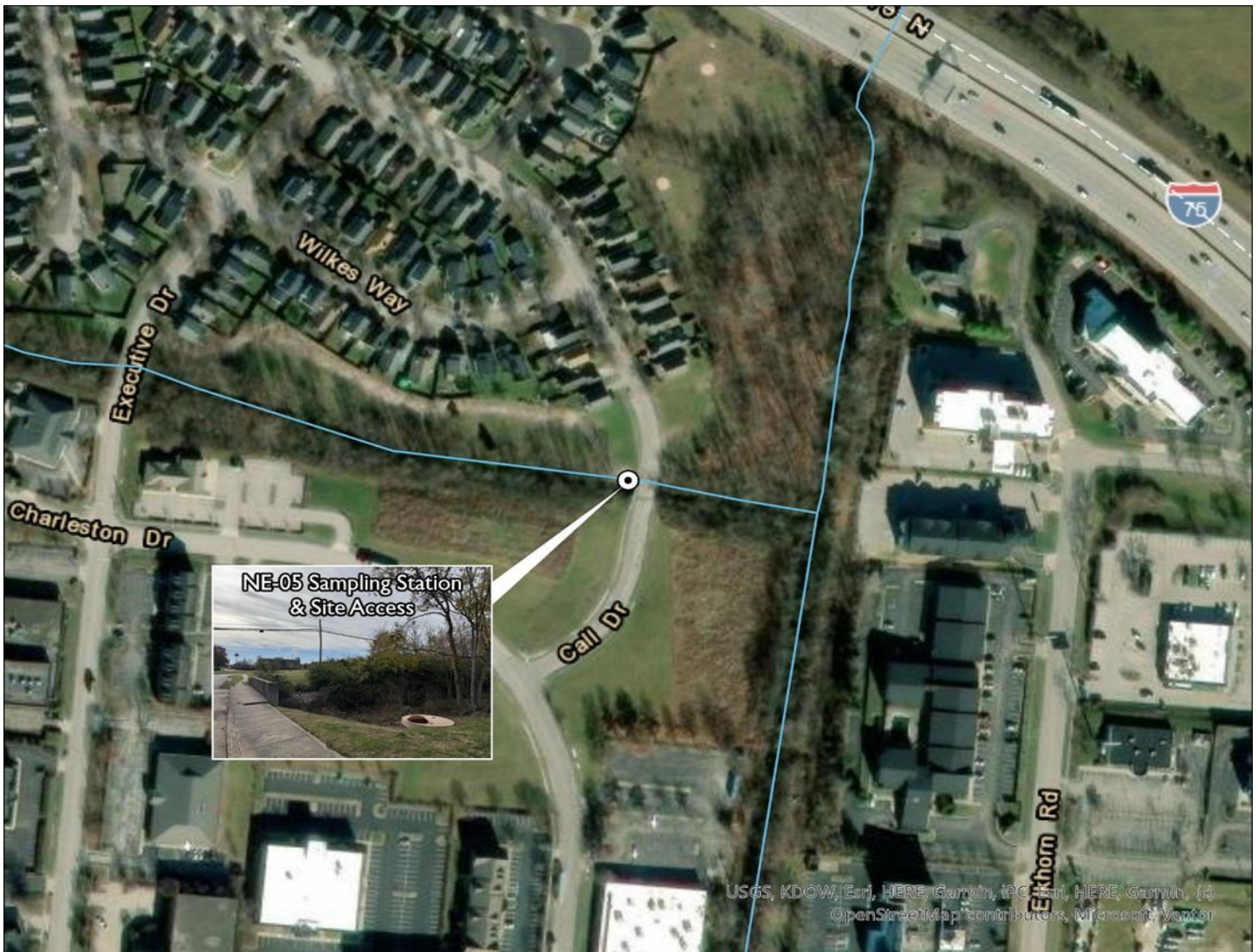
# LEXINGTON

## MS4 Stream Monitoring Program Volunteer Sampling Guide - Route D

Site: NE-05 Stream: UNT to North Elkhorn Creek Watershed: North Elkhorn Creek

Coordinates: Parking Lat: 38.04571 Long: -84.42524 Sampling Lat: 38.04564 Long: -84.42531

Enter "Parking" Lat and Long into Google Maps to generate driving directions. Park on the side of Call Drive, near the bridge. From there, walk down the mowed grass to sample the stream below the bridge.



If you have trouble accessing the site or collecting the sample, contact Ryan McGregor, Water Quality Sampling Lead, at (859) 977-2000 or (270) 206-5676. In his absence, contact Mac Hall, Data Manager at (859) 977-2000 or (859) 612-2434. A PDF copy of this guide, route KMZ, original image inserts, and other volunteer resources are available from [thirdrockconsultants.com/LFUCG-volunteer-links](http://thirdrockconsultants.com/LFUCG-volunteer-links).



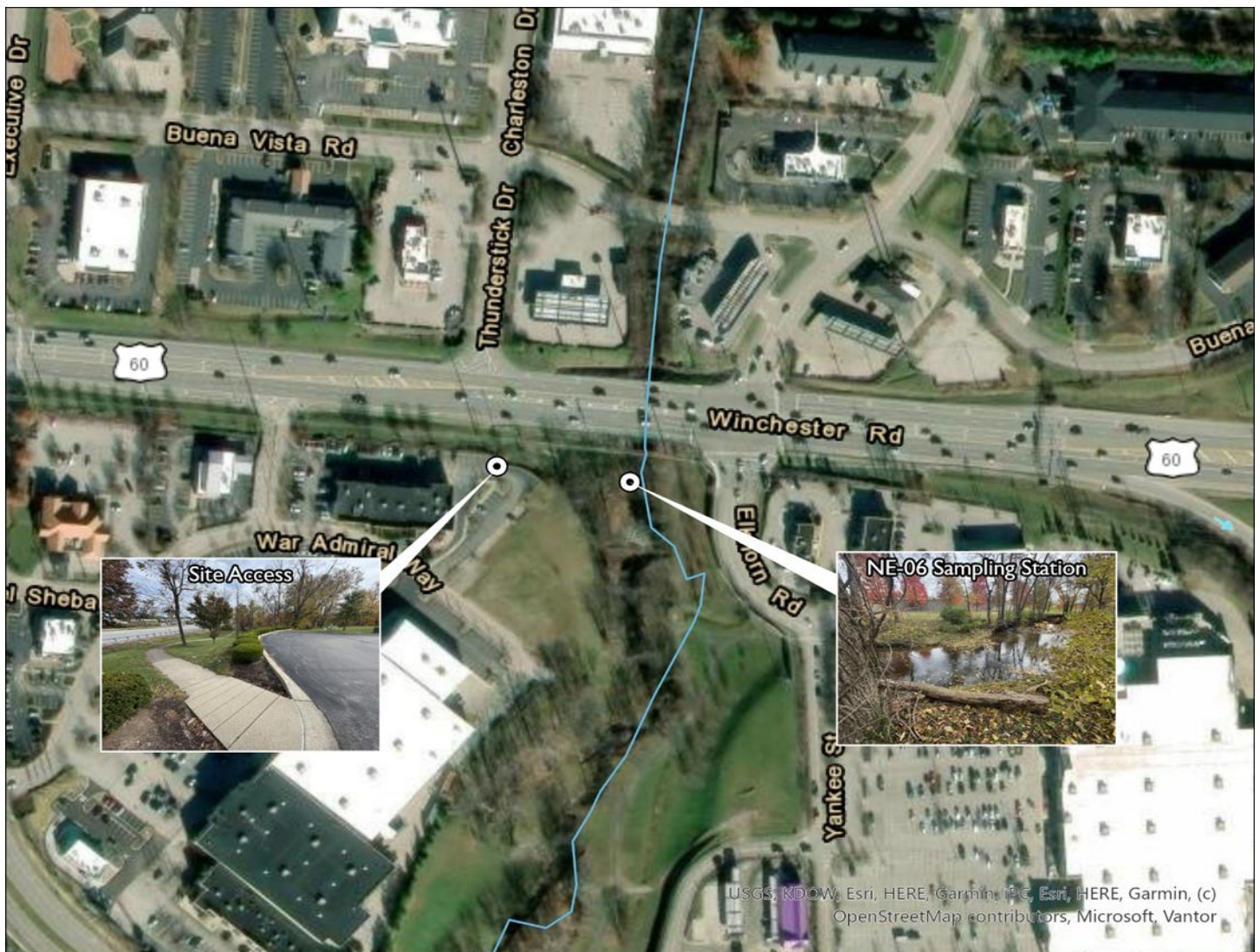
# LEXINGTON

## MS4 Stream Monitoring Program Volunteer Sampling Guide - Route D

Site: NE-06 Stream: UNT to North Elkhorn Creek Watershed: North Elkhorn Creek

Coordinates: Parking Lat: 38.04109 Long: -84.42582 Sampling Lat: 38.04103 Long: -84.42507

Enter "Parking" Lat and Long into Google Maps to generate driving directions. Park at the corner of A&W parking lot at 2251 War Admiral Way, Suite 110. From there, walk along the sidewalk adjacent to Winchester Road until you reach a bridge with black rails. Sample the stream to the right of the bridge.



If you have trouble accessing the site or collecting the sample, contact Ryan McGregor, Water Quality Sampling Lead, at (859) 977-2000 or (270) 206-5676. In his absence, contact Mac Hall, Data Manager at (859) 977-2000 or (859) 612-2434. A PDF copy of this guide, route KMZ, original image inserts, and other volunteer resources are available from [thirdrockconsultants.com/LFUCG-volunteer-links](http://thirdrockconsultants.com/LFUCG-volunteer-links).



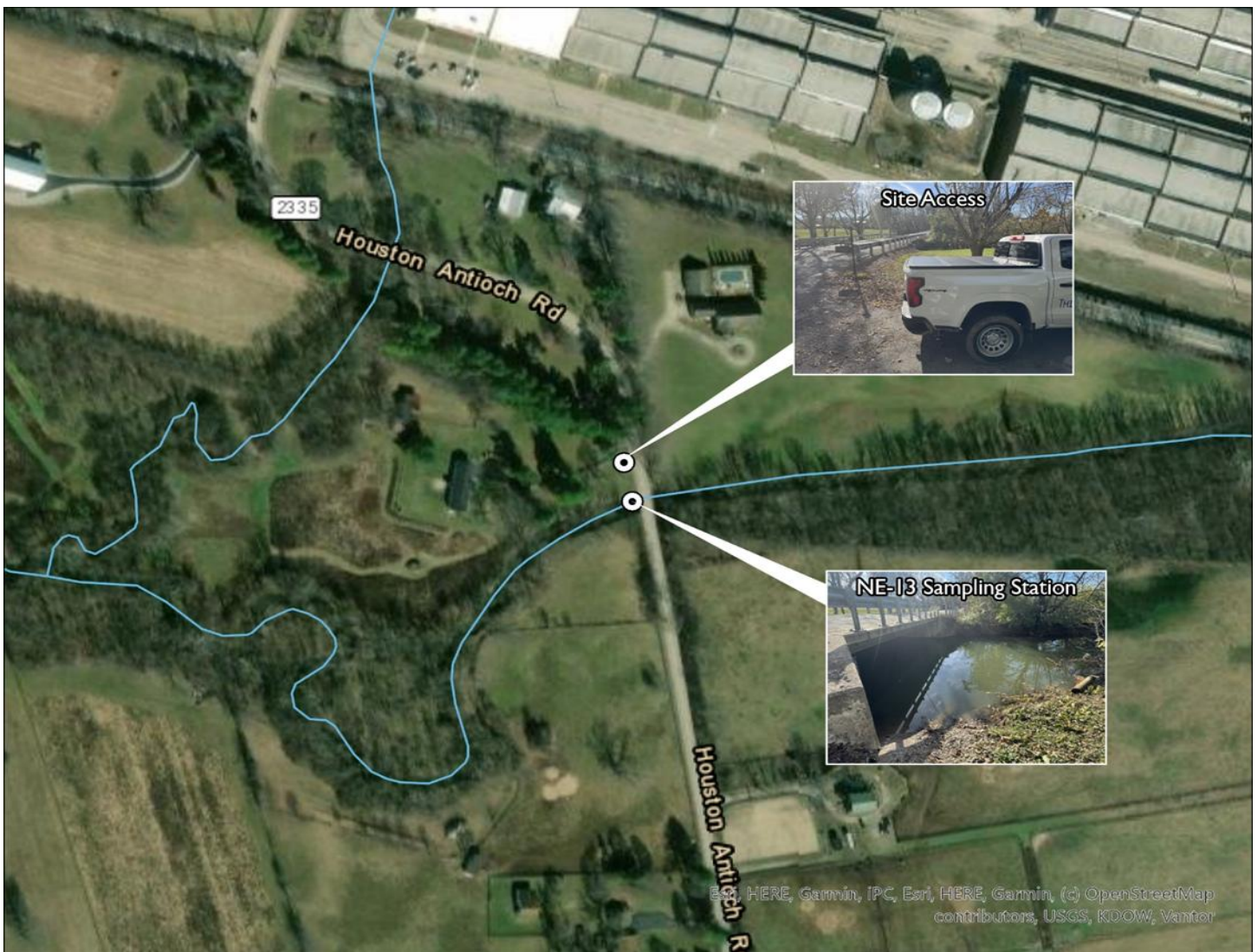
# LEXINGTON

## MS4 Stream Monitoring Program Volunteer Sampling Guide - Route D

Site: NE-13 Stream: UNT to North Elkhorn Watershed: North Elkhorn Creek

Coordinates: Parking Lat: 38.07357 Long: -84.33201 Sampling Lat: 38.07339 Long: -84.33197

Enter "Parking" Lat and Long into Google Maps to generate driving directions. Park at the driveway of 3241 Houston Antioch Road. From there, walk behind the guardrail down to the stream. Collect the sample near the bridge.



If you have trouble accessing the site or collecting the sample, contact Ryan McGregor, Water Quality Sampling Lead, at (859) 977-2000 or (270) 206-5676. In his absence, contact Mac Hall, Data Manager at (859) 977-2000 or (859) 612-2434. A PDF copy of this guide, route KMZ, original image inserts, and other volunteer resources are available from [thirdrockconsultants.com/LFUCG-volunteer-links](http://thirdrockconsultants.com/LFUCG-volunteer-links).