



LEXINGTON

MS4 Stream Monitoring Program Volunteer Sampling Guide - Route A

Site: CR-04 Stream: UNT to Cane Run Watershed: Cane Run

Coordinates: Parking Lat: 38.09870 Long: -84.48941 Sampling Lat: 38.09879 Long: -84.48958

Enter "Parking" Lat and Long into Google Maps to generate driving directions. Park at the bridge going over UNT to Cane Run in Coldstream Park. From there, walk into the woods adjacent to the bridge. You will sample the UNT to Cane Run under the bridge.



If you have trouble accessing the site or collecting the sample, contact Ryan McGregor, Water Quality Sampling Lead, at (859) 977-2000 or (270) 206-5676. In his absence, contact Mac Hall, Data Manager at (859) 977-2000 or (859) 612-2434. A PDF copy of this guide, route KMZ, original image inserts, and other volunteer resources are available from thirdrockconsultants.com/LFUCG-volunteer-links.



LEXINGTON

MS4 Stream Monitoring Program Volunteer Sampling Guide - Route A

Site: CR-07 Stream: UNT to Cane Run Watershed: Cane Run

Coordinates: Parking Lat: 38.08411 Long: -84.49893 Sampling Lat: 38.08368 Long: -84.49950

Enter "Parking" Lat and Long into Google Maps to generate driving directions. Park next to the dumpsters behind Eastern State Hospital. From there, walk down the mowed hill behind the dumpsters into the woods. The stream is approximately 50 yards into the woods.



If you have trouble accessing the site or collecting the sample, contact Ryan McGregor, Water Quality Sampling Lead, at (859) 977-2000 or (270) 206-5676. In his absence, contact Mac Hall, Data Manager at (859) 977-2000 or (859) 612-2434. A PDF copy of this guide, route KMZ, original image inserts, and other volunteer resources are available from thirdrockconsultants.com/LFUCG-volunteer-links.



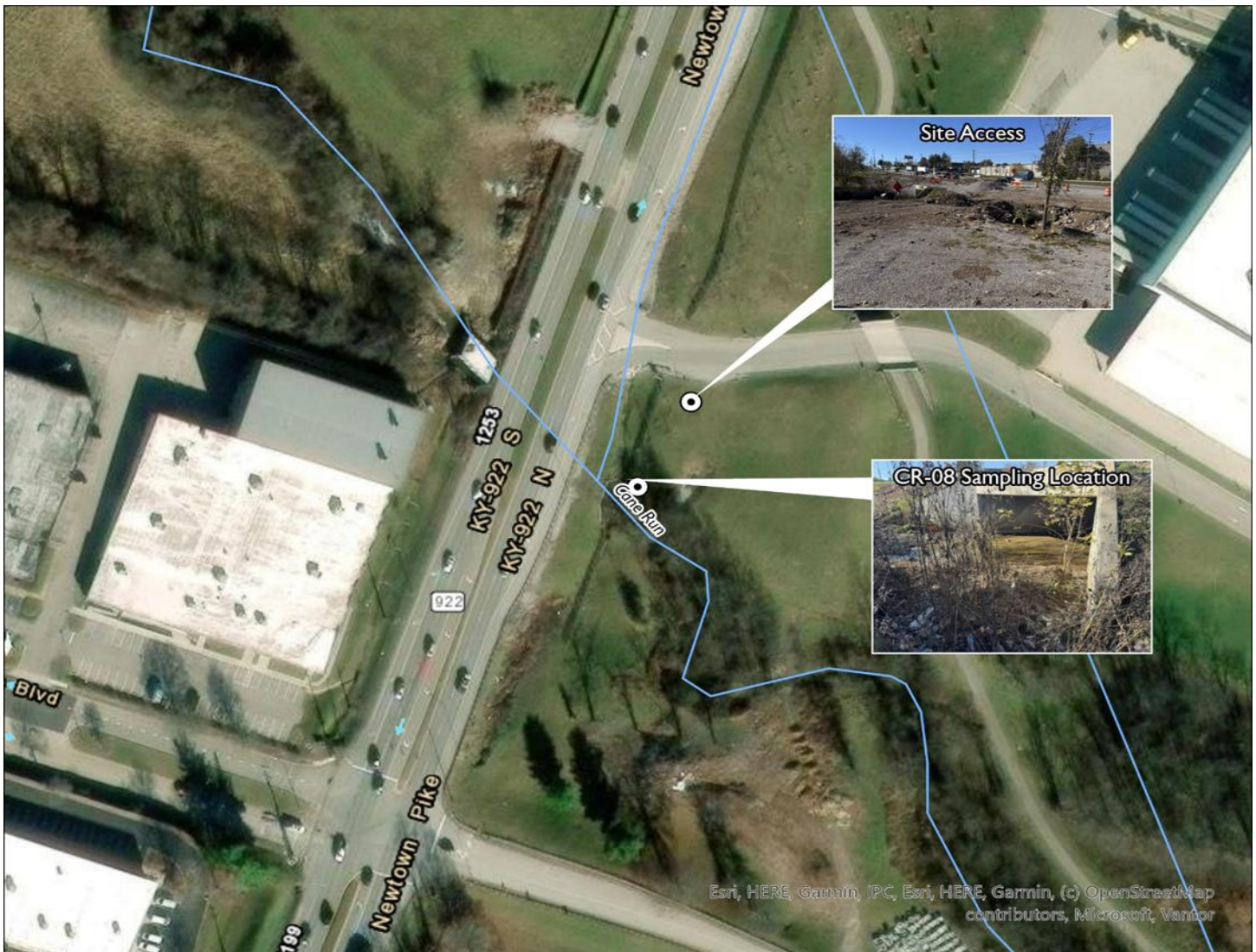
LEXINGTON

MS4 Stream Monitoring Program Volunteer Sampling Guide - Route A

Site: CR-08 Stream: UNT to Cane Run Watershed: Cane Run

Coordinates: Parking Lat: 38.08030 Long: -84.49224 Sampling Lat: 38.07954 Long: -84.49179

Enter "Parking" Lat and Long into Google Maps to generate driving directions. Park at the Amazon entrance off Newtown Pike. From there, walk toward a large concrete box culvert. You will sample near this culvert.



If you have trouble accessing the site or collecting the sample, contact Ryan McGregor, Water Quality Sampling Lead, at (859) 977-2000 or (270) 206-5676. In his absence, contact Mac Hall, Data Manager at (859) 977-2000 or (859) 612-2434. A PDF copy of this guide, route KMZ, original image inserts, and other volunteer resources are available from thirdrockconsultants.com/LFUCG-volunteer-links.



LEXINGTON

MS4 Stream Monitoring Program Volunteer Sampling Guide - Route A

Site: CR-10 Stream: Cane Run Watershed: Cane Run

Coordinates: Parking Lat: 38.07396 Long: -84.48246 Sampling Lat: 38.07396 Long: -84.48225

Enter "Parking" Lat and Long into Google Maps to generate driving directions. Park on Colesbury Circle just before the bridge. From there, facing Aurora Pools & Spas, walk down the mowed grass on the right side to the stream.



If you have trouble accessing the site or collecting the sample, contact Ryan McGregor, Water Quality Sampling Lead, at (859) 977-2000 or (270) 206-5676. In his absence, contact Mac Hall, Data Manager at (859) 977-2000 or (859) 612-2434. A PDF copy of this guide, route KMZ, original image inserts, and other volunteer resources are available from thirdrockconsultants.com/LFUCG-volunteer-links.



LEXINGTON

MS4 Stream Monitoring Program Volunteer Sampling Guide - Route A

Site: CR-S3 Stream: Cane Run Watershed: Cane Run

Coordinates: Parking Lat: 38.16789 Long: -84.55441 Sampling Lat: 38.16797 Long: -84.55431

Enter "Parking" Lat and Long into Google Maps to generate driving directions. Park at the end of side road off of US 25 near the bridge. From there, walk down the mowed grass towards an abandoned bridge over the stream. Sample near abandoned bridge.



If you have trouble accessing the site or collecting the sample, contact Ryan McGregor, Water Quality Sampling Lead, at (859) 977-2000 or (270) 206-5676. In his absence, contact Mac Hall, Data Manager at (859) 977-2000 or (859) 612-2434. A PDF copy of this guide, route KMZ, original image inserts, and other volunteer resources are available from thirdrockconsultants.com/LFUCG-volunteer-links.