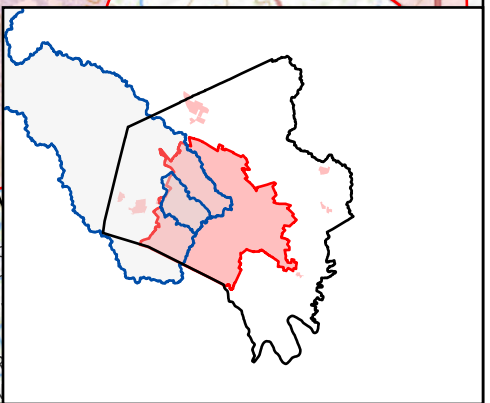


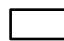




USGS The National Map
Program, Geographic Name
Dataset, National Land Co
National Transportation
Bureau TIGER/Line data; USFS P
of State HIU; NOAA N



Legend:

-  Urban Service Boundary
-  Permit-Defined Urban Area
-  Fayette County Boundary
-  Watershed Boundary
-  Monitoring Site



Lexington-Fayette Urban
County Government
Stream Monitoring Program
Sampling Route F



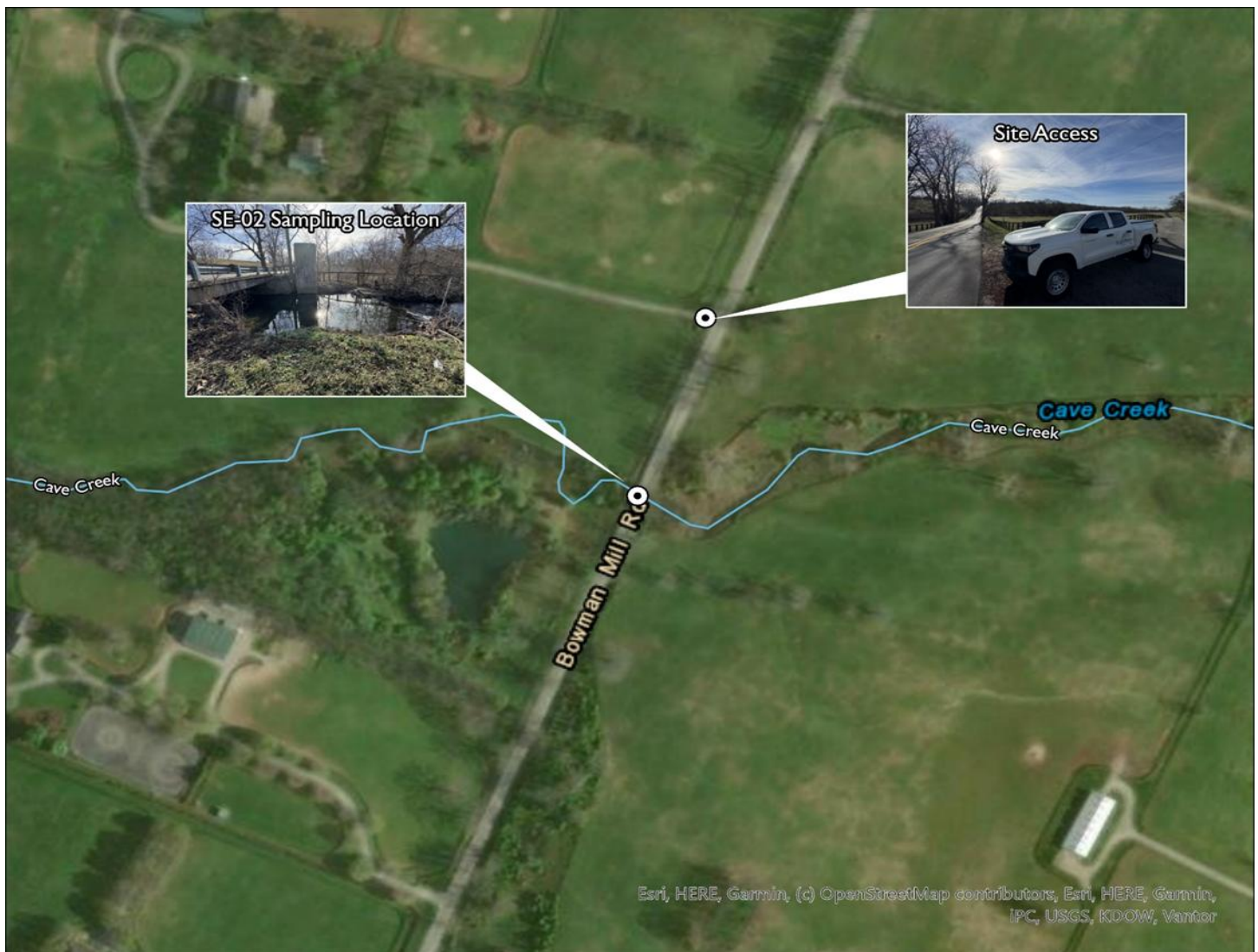
LEXINGTON

MS4 Stream Monitoring Program Volunteer Sampling Guide - Route F

Site: SE-02 Stream: Cave Creek Watershed: South Elkhorn Creek

Coordinates: Parking Lat: 38.02170 Long: -84.59338 Sampling Lat: 38.02087 Long: -84.59375

Enter "Parking" Lat and Long into Google Maps to generate driving directions. Pull up to the gate and the gate will open. Pull through the gate, turn around, and drive back through the gate and pull off in the grass to the right. From there, walk down the hill following the fence to the stream.



If you have trouble accessing the site or collecting the sample, contact Ryan McGregor, Water Quality Sampling Lead, at (859) 977-2000 or (270) 206-5676. In his absence, contact Mac Hall, Data Manager at (859) 977-2000 or (859) 612-2434. A PDF copy of this guide, route KMZ, original image inserts, and other volunteer resources are available from thirdrockconsultants.com/LFUCG-volunteer-links.



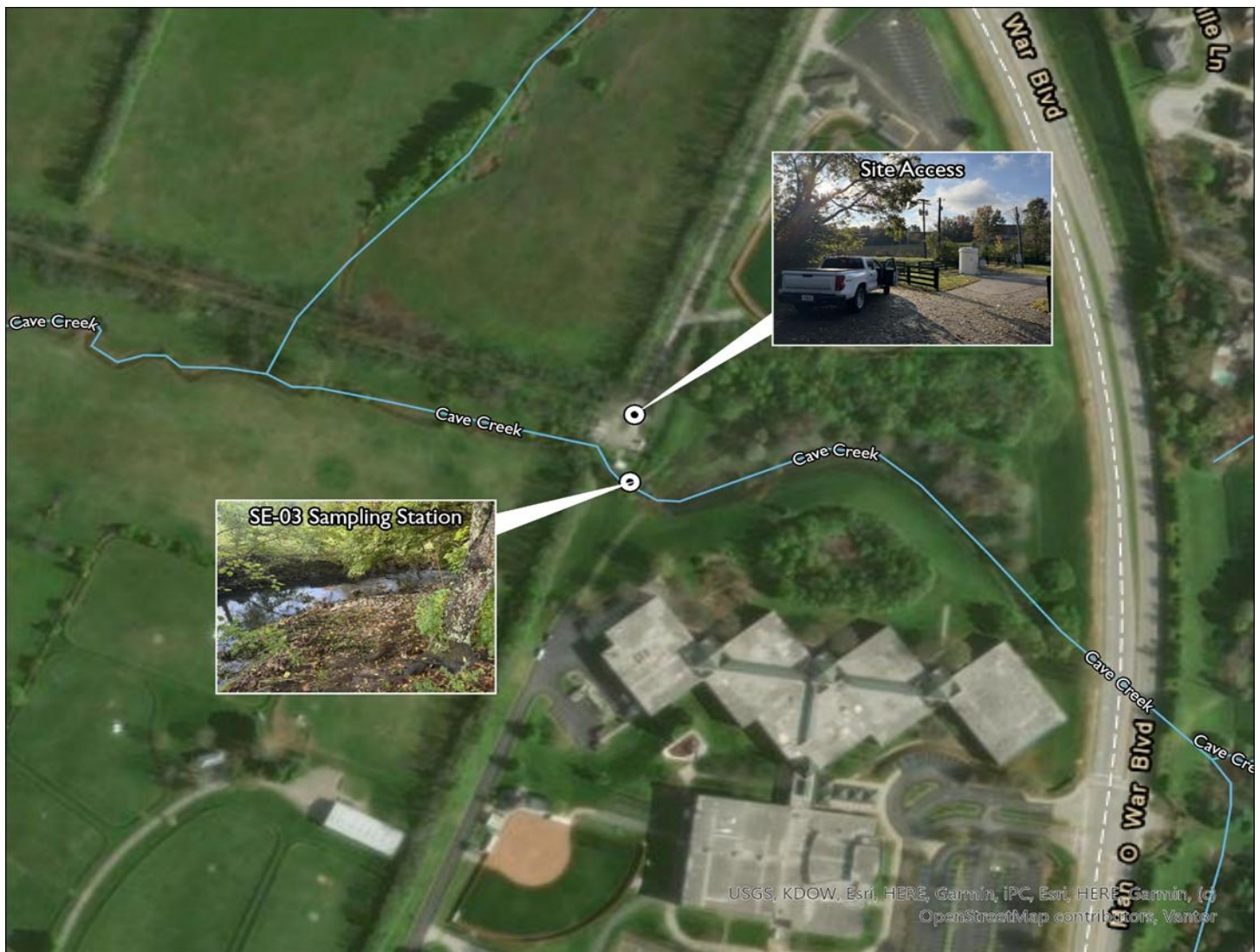
LEXINGTON

MS4 Stream Monitoring Program Volunteer Sampling Guide - Route F

Site: SE-03 Stream: Cave Creek Watershed: South Elkhorn Creek

Coordinates: Parking Lat: 38.01910 Long: -84.57778 Sampling Lat: 38.01879 Long: -84.57781

Enter "Parking" Lat and Long into Google Maps to generate driving directions. Park at the end of the service road near Dunbar High School's baseball field. From there, walk to the left of the black fence, following the fence until you reach the stream.



If you have trouble accessing the site or collecting the sample, contact Ryan McGregor, Water Quality Sampling Lead, at (859) 977-2000 or (270) 206-5676. In his absence, contact Mac Hall, Data Manager at (859) 977-2000 or (859) 612-2434. A PDF copy of this guide, route KMZ, original image inserts, and other volunteer resources are available from thirdrockconsultants.com/LFUCG-volunteer-links.



LEXINGTON

MS4 Stream Monitoring Program Volunteer Sampling Guide - Route F

Site: WR-08 Stream: Wolf Run Watershed: Wolf Run

Coordinates: Parking Lat: 38.03731 Long: -84.54635 Sampling Lat: 38.03721 Long: -84.54623

Enter "Parking" Lat and Long into Google Maps to generate driving directions. Park at Appomattox Road near the bridge. From there, walk down to the stream to sample just below the bridge.



If you have trouble accessing the site or collecting the sample, contact Ryan McGregor, Water Quality Sampling Lead, at (859) 977-2000 or (270) 206-5676. In his absence, contact Mac Hall, Data Manager at (859) 977-2000 or (859) 612-2434. A PDF copy of this guide, route KMZ, original image inserts, and other volunteer resources are available from thirdrockconsultants.com/LFUCG-volunteer-links.



LEXINGTON

MS4 Stream Monitoring Program Volunteer Sampling Guide - Route F

Site: WR-11 Stream: UNT to Wolf Run Watershed: Wolf Run

Coordinates: Parking Lat: 38.03279 Long: -84.52653 Sampling Lat: 38.03271 Long: -84.52652

Enter "Parking" Lat and Long into Google Maps to generate driving directions. Park on Bob-O-Link Drive near a concrete ditch. From the south side of Bob-O-Link Drive, walk down to a concrete lined channel. Collect sample below the black chainlink fence.



If you have trouble accessing the site or collecting the sample, contact Ryan McGregor, Water Quality Sampling Lead, at (859) 977-2000 or (270) 206-5676. In his absence, contact Mac Hall, Data Manager at (859) 977-2000 or (859) 612-2434. A PDF copy of this guide, route KMZ, original image inserts, and other volunteer resources are available from thirdrockconsultants.com/LFUCG-volunteer-links.



LEXINGTON

MS4 Stream Monitoring Program Volunteer Sampling Guide - Route F

Site: WR-13 Stream: UNT to Wolf Run Watershed: Wolf Run

Coordinates: Parking Lat: 38.02957 Long: -84.53719 Sampling Lat: 38.02965 Long: -84.53721

Enter "Parking" Lat and Long into Google Maps to generate driving directions. Park at the dead end of Allendale Drive. From there, walk between the guardrail and the chainlink fence to the right. Collect sample downstream of the bridge.



If you have trouble accessing the site or collecting the sample, contact Ryan McGregor, Water Quality Sampling Lead, at (859) 977-2000 or (270) 206-5676. In his absence, contact Mac Hall, Data Manager at (859) 977-2000 or (859) 612-2434. A PDF copy of this guide, route KMZ, original image inserts, and other volunteer resources are available from thirdrockconsultants.com/LFUCG-volunteer-links.