

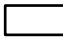




Legend

-  Urban Service Boundary
-  Permit-Defined Urban Area
-  Fayette County Boundary
-  Watershed Boundary
-  Monitoring Site

Lexington-Fayette Urban
County Government
Stream Monitoring Program
Sampling Route L



LEXINGTON

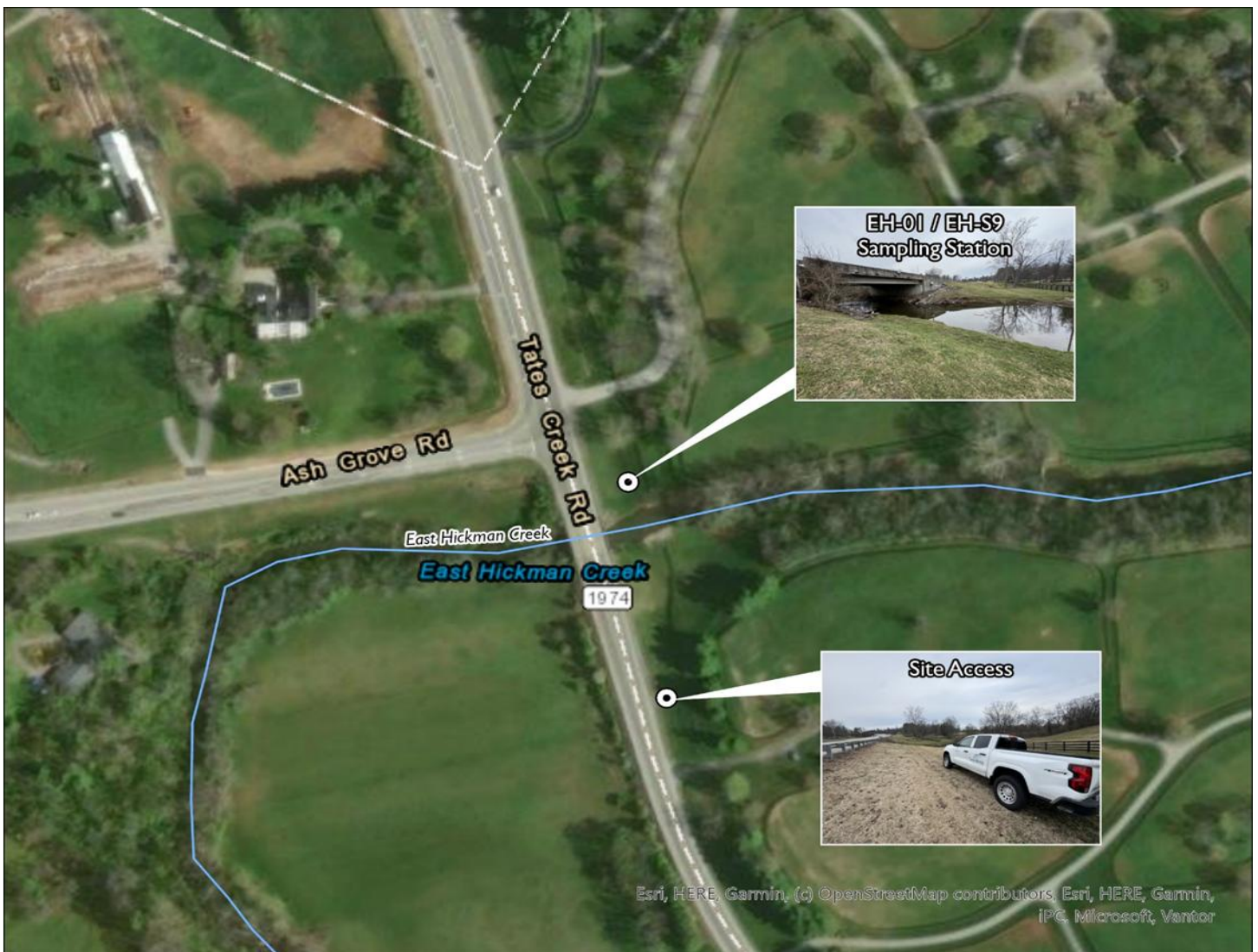
MS4 Stream Monitoring Program

Technician Sampling Guide - Route L

Site: EH-01 / EH-S9 **Stream:** East Hickman Creek **Watershed:** East Hickman Creek

Coordinates: **Parking Lat:** 37.93754 **Long:** -84.47857 **Sampling Lat:** 37.93857 **Long:** -84.47879

Enter "Parking" Lat and Long into Google Maps to generate driving directions. Park on the side of Tates Creek Road behind the guardrail. From there, walk down the mowed grass towards the stream. You will sample under the bridge.



If you have trouble accessing the site or collecting the sample, contact Ryan McGregor, Water Quality Sampling Lead, at (859) 977-2000 or (270) 206-5676. In his absence, contact Mac Hall, Data Manager at (859) 977-2000 or (859) 612-2434. A PDF copy of this guide, route KMZ, original image inserts, and other volunteer resources are available from thirdrockconsultants.com/LFUCG-volunteer-links.



LEXINGTON

MS4 Stream Monitoring Program

Technician Sampling Guide - Route L

Site: EH-03 Stream: UNT to East Hickman Creek Watershed: East Hickman Creek

Coordinates: Parking Lat: 37.95514 Long: -84.45404 Sampling Lat: 37.95437 Long: -84.45463

Enter "Parking" Lat and Long into Google Maps to generate driving directions. Park at the grass drive to the left of 2140 Delong Road (gated driveway). From there, walk down the hill along Delong Road until you reach the UNT to East Hickman Creek at the bridge.



If you have trouble accessing the site or collecting the sample, contact Ryan McGregor, Water Quality Sampling Lead, at (859) 977-2000 or (270) 206-5676. In his absence, contact Mac Hall, Data Manager at (859) 977-2000 or (859) 612-2434. A PDF copy of this guide, route KMZ, original image inserts, and other volunteer resources are available from thirdrockconsultants.com/LFUCG-volunteer-links.



LEXINGTON

MS4 Stream Monitoring Program

Technician Sampling Guide - Route L

Site: NE-08 / NE-S3 **Stream:** North Elkhorn Creek **Watershed:** North Elkhorn Creek

Coordinates: **Parking Lat:** 38.04000 **Long:** -84.41101 **Sampling Lat:** 38.04007 **Long:** -84.41101

Enter "Parking" Lat and Long into Google Maps to generate driving directions. Park on the side of Winchester Road, across from the intersection with Polo Club Blvd. From there, walk down the stream bank and sample downstream of the bridge.



If you have trouble accessing the site or collecting the sample, contact Ryan McGregor, Water Quality Sampling Lead, at (859) 977-2000 or (270) 206-5676. In his absence, contact Mac Hall, Data Manager at (859) 977-2000 or (859) 612-2434. A PDF copy of this guide, route KMZ, original image inserts, and other volunteer resources are available from thirdrockconsultants.com/LFUCG-volunteer-links.



LEXINGTON

MS4 Stream Monitoring Program

Technician Sampling Guide - Route L

Site: NE-12 Stream: North Elkhorn Creek Watershed: North Elkhorn Creek

Coordinates: Parking Lat: 38.05805 Long: -84.41449 Sampling Lat: 38.05792 Long: -84.41481

Enter "Parking" Lat and Long into Google Maps to generate driving directions. Park on the side of I-64 East, just past the guardrail of the bridge. From there, walk towards the bridge behind the guardrail. You will access the stream on the east side by climbing down the bridge headwall and over a right-of-way fence to the stream.



If you have trouble accessing the site or collecting the sample, contact Ryan McGregor, Water Quality Sampling Lead, at (859) 977-2000 or (270) 206-5676. In his absence, contact Mac Hall, Data Manager at (859) 977-2000 or (859) 612-2434. A PDF copy of this guide, route KMZ, original image inserts, and other volunteer resources are available from thirdrockconsultants.com/LFUCG-volunteer-links.