



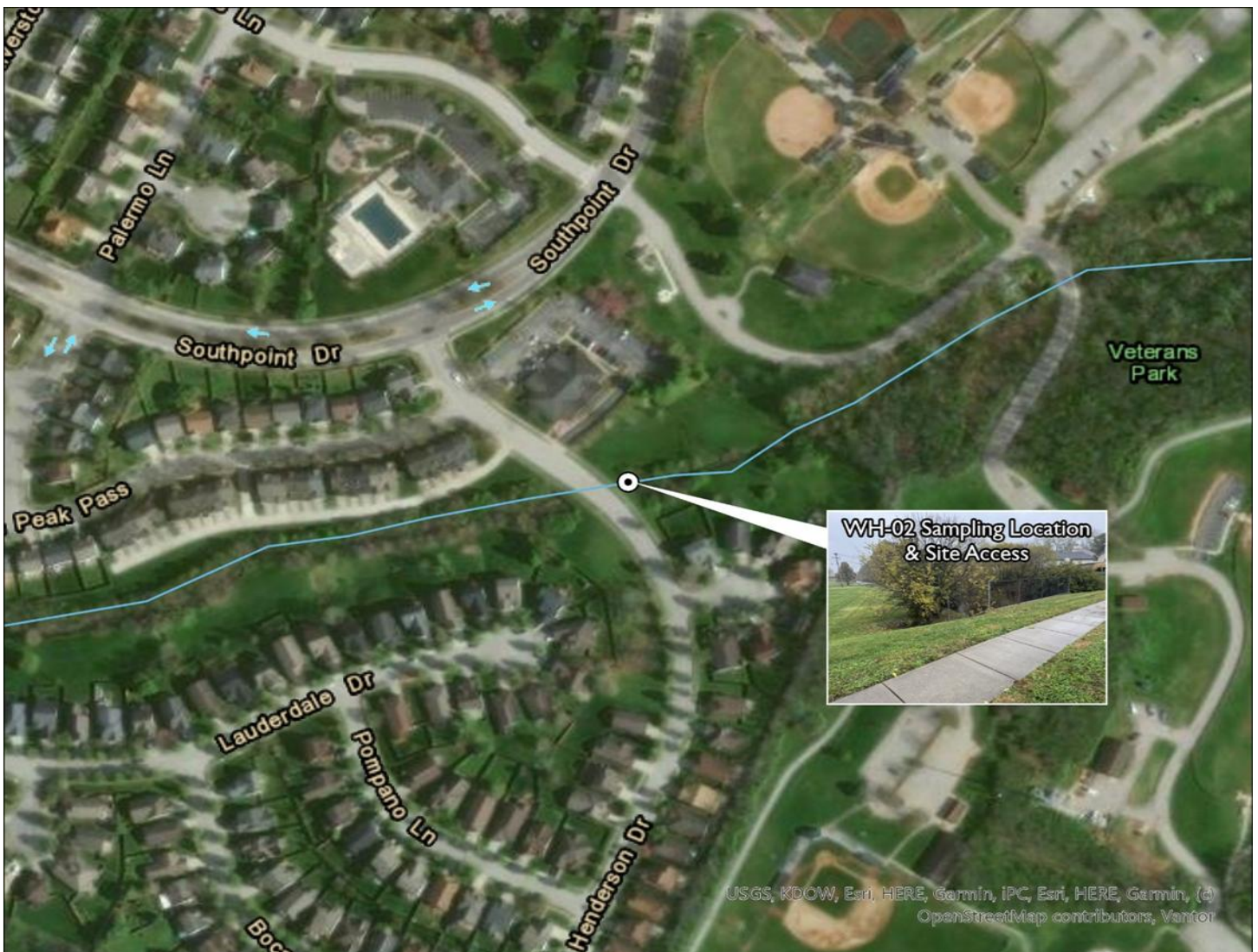
LEXINGTON

MS4 Stream Monitoring Program Volunteer Sampling Guide - Route I

Site: WH-02 Stream: UNT to West Hickman Creek Watershed: West Hickman Creek

Coordinates: Parking Lat: 37.95520 Long: -84.50630 Sampling Lat: 37.95522 Long: -84.50583

Enter "Parking" Lat and Long into Google Maps to generate driving directions. Park on Henderson Drive near Lexington Clinic located at 630 Southport Drive. From there, walk down the sidewalk to the chainlink fence. Walk down the mowed grass to the stream that is below the fence.



If you have trouble accessing the site or collecting the sample, contact Ryan McGregor, Water Quality Sampling Lead, at (859) 977-2000 or (270) 206-5676. In his absence, contact Mac Hall, Data Manager at (859) 977-2000 or (859) 612-2434. A PDF copy of this guide, route KMZ, original image inserts, and other volunteer resources are available from thirdrockconsultants.com/LFUCG-volunteer-links.



LEXINGTON

MS4 Stream Monitoring Program Volunteer Sampling Guide - Route I

Site: WH-05 Stream: West Hickman Creek Watershed: West Hickman Creek

Coordinates: Parking Lat: 37.97052 Long: -84.50189 Sampling Lat: 37.96926 Long: -84.50214

Enter "Parking" Lat and Long into Google Maps to generate driving directions. Park on the side of the road across from 3809 Forest Green Drive. From there, walk onto the paved Belleau Woods path and you will see the stream on the right.



If you have trouble accessing the site or collecting the sample, contact Ryan McGregor, Water Quality Sampling Lead, at (859) 977-2000 or (270) 206-5676. In his absence, contact Mac Hall, Data Manager at (859) 977-2000 or (859) 612-2434. A PDF copy of this guide, route KMZ, original image inserts, and other volunteer resources are available from thirdrockconsultants.com/LFUCG-volunteer-links.



LEXINGTON

MS4 Stream Monitoring Program Volunteer Sampling Guide - Route I

Site: WH-06 Stream: UNT to West Hickman Creek Watershed: West Hickman Creek

Coordinates: Parking Lat: 37.96562 Long: -84.50598 Sampling Lat: 37.96618 Long: -84.50569

Enter "Parking" Lat and Long into Google Maps to generate driving directions. Park between 761 and 765 Rainwater Drive. From there, walk down the mowed grass hill in the powerline corridor directly to the stream.



If you have trouble accessing the site or collecting the sample, contact Ryan McGregor, Water Quality Sampling Lead, at (859) 977-2000 or (270) 206-5676. In his absence, contact Mac Hall, Data Manager at (859) 977-2000 or (859) 612-2434. A PDF copy of this guide, route KMZ, original image inserts, and other volunteer resources are available from thirdrockconsultants.com/LFUCG-volunteer-links.



LEXINGTON

MS4 Stream Monitoring Program Volunteer Sampling Guide - Route I

Site: WH-12 Stream: UNT to West Hickman Creek Watershed: West Hickman Creek

Coordinates: Parking Lat: 37.97397 Long: -84.48481 Sampling Lat: 37.97414 Long: -84.48495

Enter "Parking" Lat and Long into Google Maps to generate driving directions. Park at 3657 Crosby Drive. From there, walk down the mowed grass along the bushes directly to the stream.



If you have trouble accessing the site or collecting the sample, contact Ryan McGregor, Water Quality Sampling Lead, at (859) 977-2000 or (270) 206-5676. In his absence, contact Mac Hall, Data Manager at (859) 977-2000 or (859) 612-2434. A PDF copy of this guide, route KMZ, original image inserts, and other volunteer resources are available from thirdrockconsultants.com/LFUCG-volunteer-links.



LEXINGTON

MS4 Stream Monitoring Program Volunteer Sampling Guide - Route I

Site: WH-23 / WH-S3 Stream: West Hickman Creek Watershed: West Hickman Creek

Coordinates: Parking Lat: 37.93432 Long: -84.50155 Sampling Lat: 37.93423 Long: -84.50221

Enter "Parking" Lat and Long into Google Maps to generate driving directions. Park on W Hickman Plant Road outside of gate. Facing the gate, walk to the left towards the bridge and fence. Go through the gap in the fence to access the stream. Collect sample downstream of the bridge.



If you have trouble accessing the site or collecting the sample, contact Ryan McGregor, Water Quality Sampling Lead, at (859) 977-2000 or (270) 206-5676. In his absence, contact Mac Hall, Data Manager at (859) 977-2000 or (859) 612-2434. A PDF copy of this guide, route KMZ, original image inserts, and other volunteer resources are available from thirdrockconsultants.com/LFUCG-volunteer-links.