

West Hickman Creek Watershed

WH-15

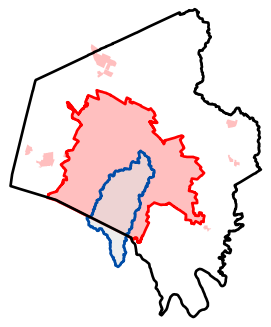
WH-20

WH-22






WH-18

WH-13

USGS The National Map  
Program, Geographic Name  
Dataset, National Land Co  
National Transportation  
Bureau TIGER/Line data; USFS R  
of State HIU; NOAA N



**Legend**

-  Urban Service Boundary
-  Permit-Defined Urban Area
-  Fayette County Boundary
-  Watershed Boundary
-  Monitoring Site



Lexington-Fayette Urban  
County Government  
Stream Monitoring Program  
Sampling Route J



# LEXINGTON

## MS4 Stream Monitoring Program Volunteer Sampling Guide - Route J

Site: WH-13 Stream: West Hickman Creek Watershed: West Hickman Creek

Coordinates: Parking Lat: 37.98107 Long: -84.49017 Sampling Lat: 37.98085 Long: -84.49009

Enter "Parking" Lat and Long into Google Maps to generate driving directions. From there, walk on sidewalk towards intersection with Armstrong Mill Road. Walk down the mowed grass to the left behind a guardrail. There will be a riprap ditch that goes down to the stream. Collect sample by the bridge.



If you have trouble accessing the site or collecting the sample, contact Ryan McGregor, Water Quality Sampling Lead, at (859) 977-2000 or (270) 206-5676. In his absence, contact Mac Hall, Data Manager at (859) 977-2000 or (859) 612-2434. A PDF copy of this guide, route KMZ, original image inserts, and other volunteer resources are available from [thirdrockconsultants.com/LFUCG-volunteer-links](http://thirdrockconsultants.com/LFUCG-volunteer-links).



# LEXINGTON

## MS4 Stream Monitoring Program Volunteer Sampling Guide - Route J

Site: WH-15 Stream: UNT to West Hickman Creek Watershed: West Hickman Creek

Coordinates: Parking Lat: 37.98659 Long: -84.49468 Sampling Lat: 37.98668 Long: -84.49452

Enter "Parking" Lat and Long into Google Maps to generate driving directions. Park just inside the entrance to Saddlebrook at tates creek apartment complex. From there go down the side wall of the bridge behind a metal railing to the stream.



If you have trouble accessing the site or collecting the sample, contact Ryan McGregor, Water Quality Sampling Lead, at (859) 977-2000 or (270) 206-5676. In his absence, contact Mac Hall, Data Manager at (859) 977-2000 or (859) 612-2434. A PDF copy of this guide, route KMZ, original image inserts, and other volunteer resources are available from [thirdrockconsultants.com/LFUCG-volunteer-links](http://thirdrockconsultants.com/LFUCG-volunteer-links).



# LEXINGTON

## MS4 Stream Monitoring Program Volunteer Sampling Guide - Route J

Site: WH-18 Stream: West Hickman Creek Watershed: West Hickman Creek

Coordinates: Parking Lat: 37.98622 Long: -84.48532 Sampling Lat: 37.98612 Long: -84.48515

Enter "Parking" Lat and Long into Google Maps to generate driving directions. Park at the bridge near 3474 Greentree Road. From there, walk down the mowed grass behind a metal fence and weight limit sign, and this will lead directly to the stream.



If you have trouble accessing the site or collecting the sample, contact Ryan McGregor, Water Quality Sampling Lead, at (859) 977-2000 or (270) 206-5676. In his absence, contact Mac Hall, Data Manager at (859) 977-2000 or (859) 612-2434. A PDF copy of this guide, route KMZ, original image inserts, and other volunteer resources are available from [thirdrockconsultants.com/LFUCG-volunteer-links](http://thirdrockconsultants.com/LFUCG-volunteer-links).



# LEXINGTON

## MS4 Stream Monitoring Program Volunteer Sampling Guide - Route J

Site: WH-20 Stream: West Hickman Creek Watershed: West Hickman Creek

Coordinates: Parking Lat: 37.99912 Long: -84.47265 Sampling Lat: 37.99908 Long: -84.47320

Enter "Parking" Lat and Long into Google Maps to generate driving directions. Park at the west corner of parking lot at 2048 Edgewater Court. From there, walk across the mowed grass adjacent to parking lot to the stream near the trees.



If you have trouble accessing the site or collecting the sample, contact Ryan McGregor, Water Quality Sampling Lead, at (859) 977-2000 or (270) 206-5676. In his absence, contact Mac Hall, Data Manager at (859) 977-2000 or (859) 612-2434. A PDF copy of this guide, route KMZ, original image inserts, and other volunteer resources are available from [thirdrockconsultants.com/LFUCG-volunteer-links](http://thirdrockconsultants.com/LFUCG-volunteer-links).



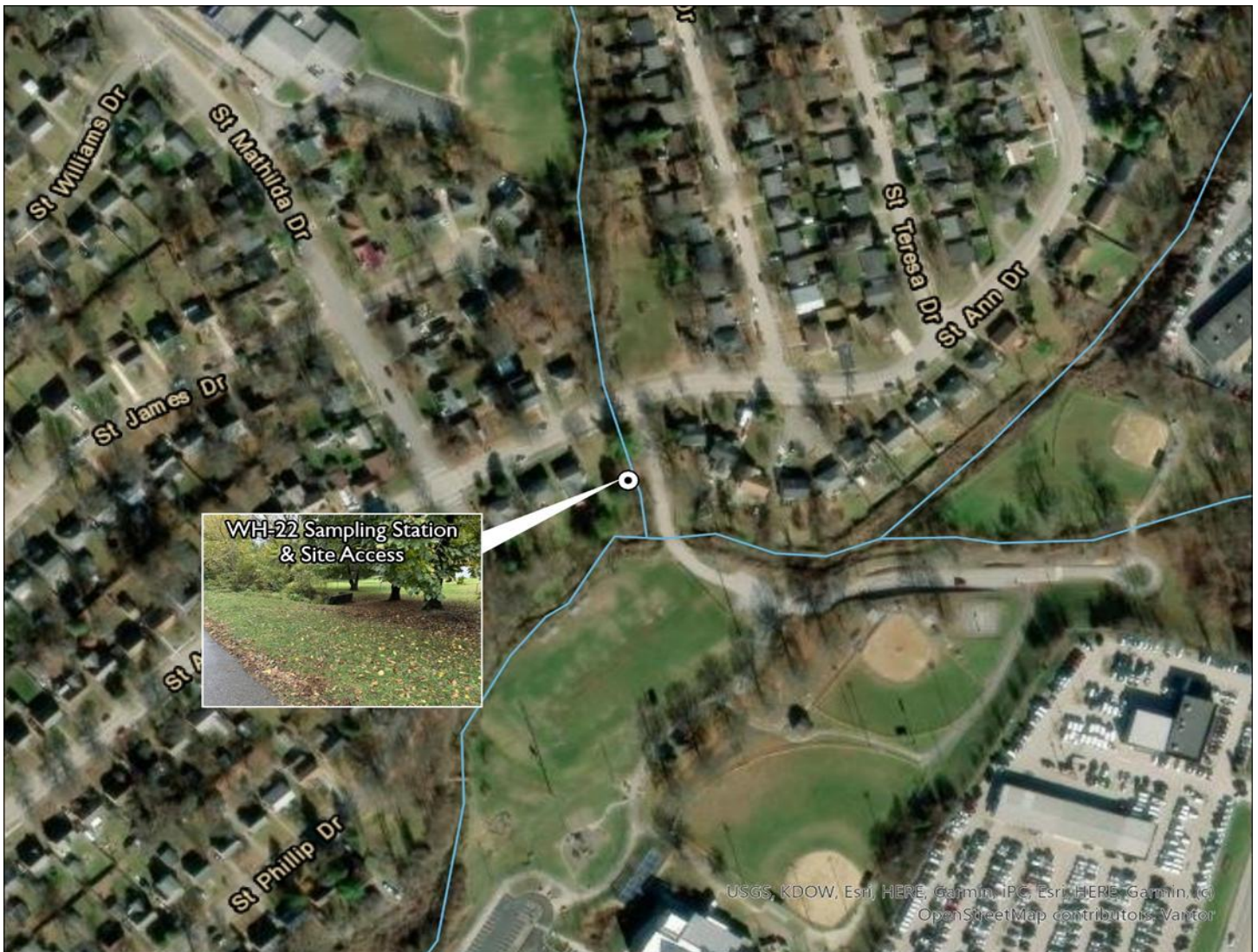
# LEXINGTON

## MS4 Stream Monitoring Program Volunteer Sampling Guide - Route J

Site: WH-22 Stream: UNT to West Hickman Creek Watershed: West Hickman Creek

Coordinates: Parking Lat: 38.02147 Long: -84.45931 Sampling Lat: 38.02135 Long: -84.45942

Enter "Parking" Lat and Long into Google Maps to generate driving directions. Park just inside the entrance to Idle Hour Park at 216 St. Ann Drive. From there, walk down mowed grass and collect sample below stone headwall.



If you have trouble accessing the site or collecting the sample, contact Ryan McGregor, Water Quality Sampling Lead, at (859) 977-2000 or (270) 206-5676. In his absence, contact Mac Hall, Data Manager at (859) 977-2000 or (859) 612-2434. A PDF copy of this guide, route KMZ, original image inserts, and other volunteer resources are available from [thirdrockconsultants.com/LFUCG-volunteer-links](http://thirdrockconsultants.com/LFUCG-volunteer-links).