



# LEXINGTON

## MS4 Stream Monitoring Program

### Technician Sampling Guide - Route M

**Site:** SE-01 / SE-S1      **Stream:** South Elkhorn Creek      **Watershed:** South Elkhorn Creek

**Coordinates:**   **Parking Lat:** 38.02580   **Long:** -84.61737      **Sampling Lat:** 38.02565   **Long:** -84.61765

Enter "Parking" Lat and Long into Google Maps to generate driving directions. Park at the concrete pull off on the side of Parkers Mill Rd. You must contact Airport Operations prior to parking in this location. The contact number is 859-452-3112. From there, walk into the woods to the right, facing the large steel beams at the end of the concrete pull off. You will see the stream once inside the woods. Collect sample near the large stones in the stream just upstream of the bridge.



If you have trouble accessing the site or collecting the sample, contact Ryan McGregor, Water Quality Sampling Lead, at (859) 977-2000 or (270) 206-5676. In his absence, contact Mac Hall, Data Manager at (859) 977-2000 or (859) 612-2434. A PDF copy of this guide, route KMZ, original image inserts, and other volunteer resources are available from [thirdrockconsultants.com/LFUCG-volunteer-links](http://thirdrockconsultants.com/LFUCG-volunteer-links).



# LEXINGTON

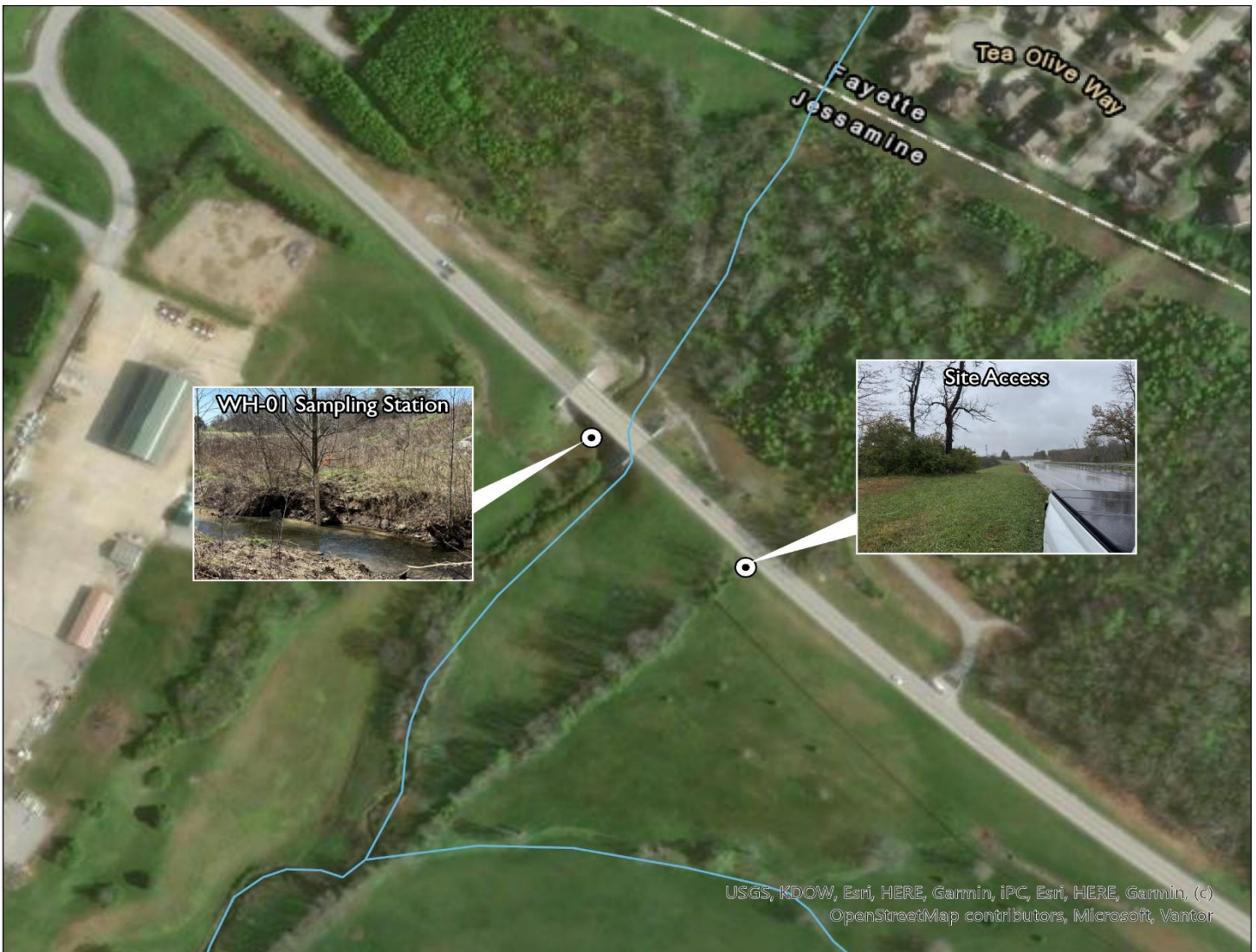
## MS4 Stream Monitoring Program

### Technician Sampling Guide - Route M

Site: WH-01 Stream: UNT to West Hickman Creek Watershed: West Hickman Creek

Coordinates: Parking Lat: 37.94347 Long: -84.49391 Sampling Lat: 37.94466 Long: -84.49430

Enter "Parking" Lat and Long into Google Maps to generate driving directions. Park on East Brannon Road near the guardrail. From there, walk down mowed hill directly to the stream.



If you have trouble accessing the site or collecting the sample, contact Ryan McGregor, Water Quality Sampling Lead, at (859) 977-2000 or (270) 206-5676. In his absence, contact Mac Hall, Data Manager at (859) 977-2000 or (859) 612-2434. A PDF copy of this guide, route KMZ, original image inserts, and other volunteer resources are available from [thirdrockconsultants.com/LFUCG-volunteer-links](http://thirdrockconsultants.com/LFUCG-volunteer-links).



# LEXINGTON

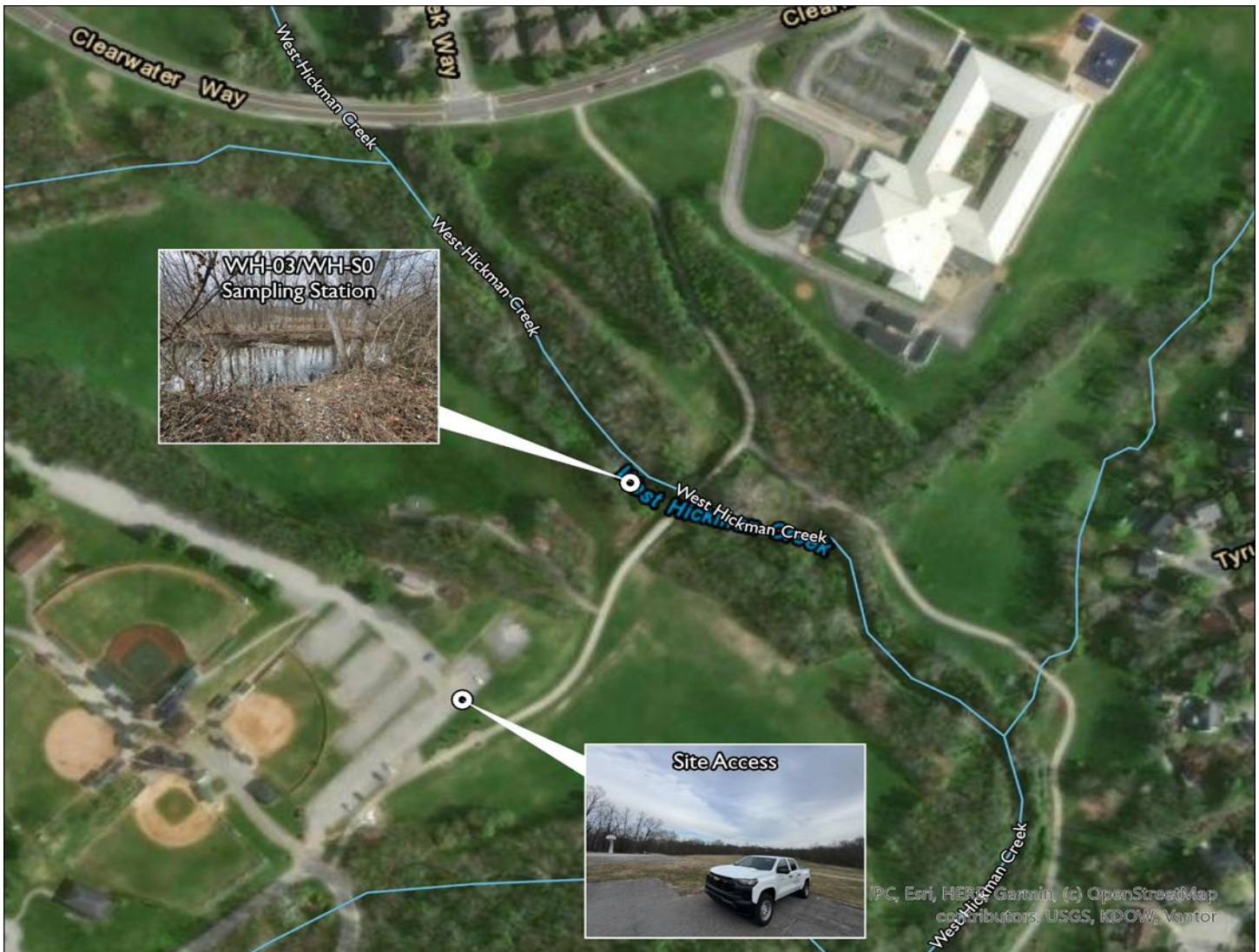
## MS4 Stream Monitoring Program

### Technician Sampling Guide - Route M

Site: WH-03 / WH-S0 Stream: West Hickman Creek Watershed: West Hickman Creek

Coordinates: Parking Lat: 37.95709 Long: -84.50309 Sampling Lat: 37.95824 Long: -84.50222

Enter "Parking" Lat and Long into Google Maps to generate driving directions. Park in the parking lot near the basketball court at Veterans Park. From there, walk down the hill from the parking lot to the paved path at the bottom of the hill. Follow the path towards the bridge and you will access the stream just upstream of the bridge.



If you have trouble accessing the site or collecting the sample, contact Ryan McGregor, Water Quality Sampling Lead, at (859) 977-2000 or (270) 206-5676. In his absence, contact Mac Hall, Data Manager at (859) 977-2000 or (859) 612-2434. A PDF copy of this guide, route KMZ, original image inserts, and other volunteer resources are available from [thirdrockconsultants.com/LFUCG-volunteer-links](https://thirdrockconsultants.com/LFUCG-volunteer-links).



# LEXINGTON

## MS4 Stream Monitoring Program

### Technician Sampling Guide - Route M

Site: WR-01 / WR-S2 Stream: Wolf Run Watershed: Wolf Run

Coordinates: Parking Lat: 38.06692 Long: -84.55381 Sampling Lat: 38.06744 Long: -84.55405

Enter "Parking" Lat and Long into Google Maps to generate driving directions. Park on the gravel pull off on the side of Old Frankfort Pike. From there, walk along guardrails towards the stream. Collect sample below the bridge.



If you have trouble accessing the site or collecting the sample, contact Ryan McGregor, Water Quality Sampling Lead, at (859) 977-2000 or (270) 206-5676. In his absence, contact Mac Hall, Data Manager at (859) 977-2000 or (859) 612-2434. A PDF copy of this guide, route KMZ, original image inserts, and other volunteer resources are available from [thirdrockconsultants.com/LFUCG-volunteer-links](http://thirdrockconsultants.com/LFUCG-volunteer-links).