

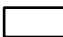




**Legend**

-  Urban Service Boundary
-  Permit-Defined Urban Area
-  Fayette County Boundary
-  Watershed Boundary
-  Monitoring Site

Lexington-Fayette Urban  
County Government  
Stream Monitoring Program  
Sampling Route K



# LEXINGTON

## MS4 Stream Monitoring Program

### Technician Sampling Guide - Route K

Site: CR-05 / CR-S2 Stream: Cane Run Watershed: Cane Run

Coordinates: Parking Lat: 38.09237 Long: -84.50179 Sampling Lat: 38.09231 Long: -84.50138

Enter "Parking" Lat and Long into Google Maps to generate driving directions. Park on the side of Citation Blvd. From there, walk towards the bridge and down the riprap slope to the stream. You will sample Cane Run under the bridge.



If you have trouble accessing the site or collecting the sample, contact Ryan McGregor, Water Quality Sampling Lead, at (859) 977-2000 or (270) 206-5676. In his absence, contact Mac Hall, Data Manager at (859) 977-2000 or (859) 612-2434. A PDF copy of this guide, route KMZ, original image inserts, and other volunteer resources are available from [thirdrockconsultants.com/LFUCG-volunteer-links](http://thirdrockconsultants.com/LFUCG-volunteer-links).



# LEXINGTON

## MS4 Stream Monitoring Program

### Technician Sampling Guide - Route K

Site: TB-01 / TB-S3 Stream: Town Branch Watershed: Town Branch

Coordinates: Parking Lat: 38.09383 Long: -84.56975 Sampling Lat: 38.09431 Long: -84.56986

Enter "Parking" Lat and Long into Google Maps to generate driving directions. Park at the back of Darby Dan Farm. The stream is located at the very back of Darby Dan Farm.



If you have trouble accessing the site or collecting the sample, contact Ryan McGregor, Water Quality Sampling Lead, at (859) 977-2000 or (270) 206-5676. In his absence, contact Mac Hall, Data Manager at (859) 977-2000 or (859) 612-2434. A PDF copy of this guide, route KMZ, original image inserts, and other volunteer resources are available from [thirdrockconsultants.com/LFUCG-volunteer-links](http://thirdrockconsultants.com/LFUCG-volunteer-links).



# LEXINGTON

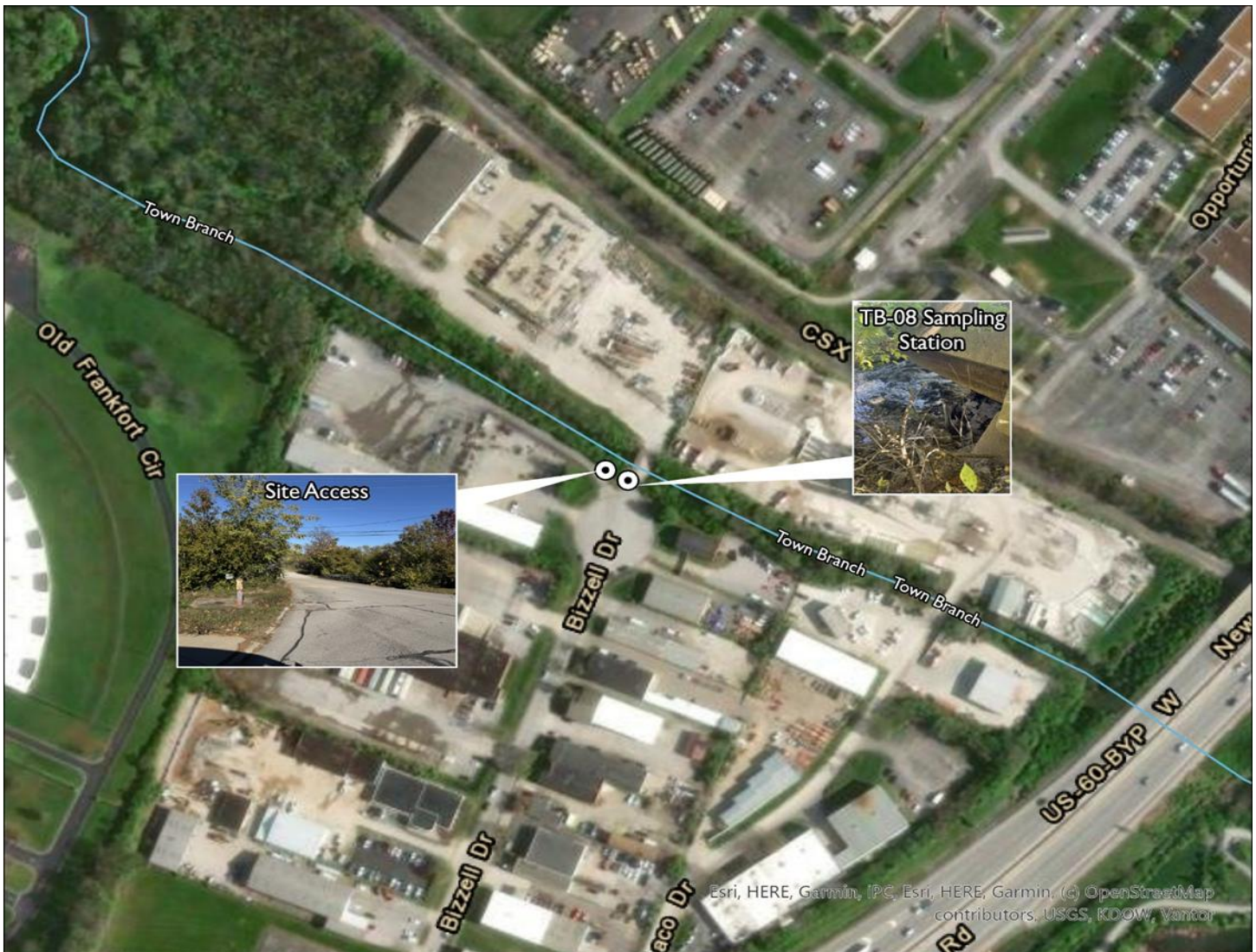
## MS4 Stream Monitoring Program

### Technician Sampling Guide - Route K

Site: TB-08 Stream: Town Branch Watershed: Town Branch

Coordinates: Parking Lat: 38.06628 Long: -84.54064 Sampling Lat: 38.06626 Long: -84.54054

Enter "Parking" Lat and Long into Google Maps to generate driving directions. Park near the bridge over Town Branch at the end of Bizzell Drive. From there, you will access the stream by the bridge abutment on the side of the bridge near the 601 sign.



If you have trouble accessing the site or collecting the sample, contact Ryan McGregor, Water Quality Sampling Lead, at (859) 977-2000 or (270) 206-5676. In his absence, contact Mac Hall, Data Manager at (859) 977-2000 or (859) 612-2434. A PDF copy of this guide, route KMZ, original image inserts, and other volunteer resources are available from [thirdrockconsultants.com/LFUCG-volunteer-links](http://thirdrockconsultants.com/LFUCG-volunteer-links).



# LEXINGTON

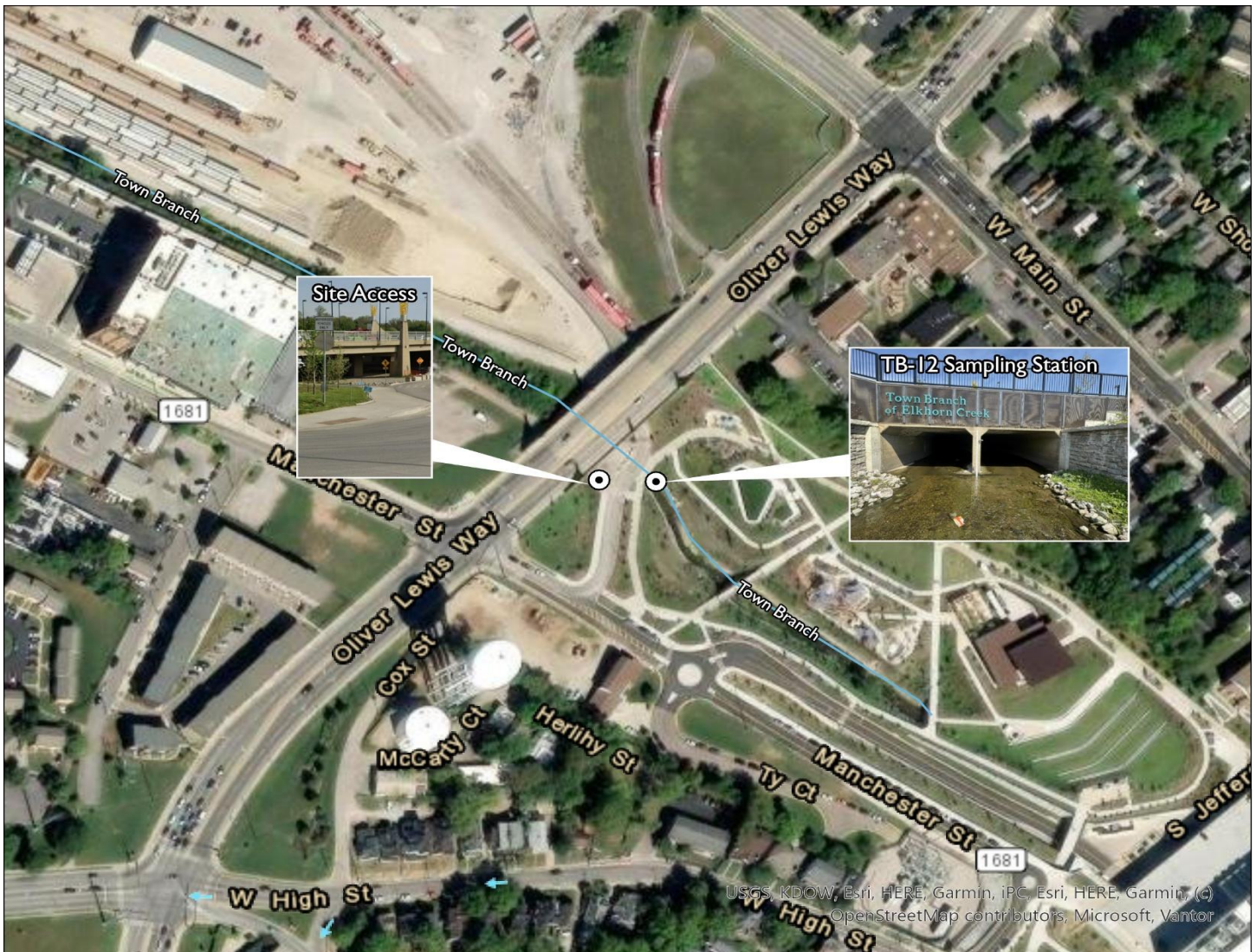
## MS4 Stream Monitoring Program

### Technician Sampling Guide - Route K

Site: TB-12 Stream: Town Branch Watershed: Town Branch

Coordinates: Parking Lat: 38.05236 Long: -84.50737 Sampling Lat: 38.05252 Long: -84.50714

Enter "Parking" Lat and Long into Google Maps to generate driving directions. Park on the paved path under Oliver Lewis Way bridge. From there, walk across the road into Gatton Park. Descend down stream bank to Town Branch.



If you have trouble accessing the site or collecting the sample, contact Ryan McGregor, Water Quality Sampling Lead, at (859) 977-2000 or (270) 206-5676. In his absence, contact Mac Hall, Data Manager at (859) 977-2000 or (859) 612-2434. A PDF copy of this guide, route KMZ, original image inserts, and other volunteer resources are available from [thirdrockconsultants.com/LFUCG-volunteer-links](http://thirdrockconsultants.com/LFUCG-volunteer-links).



# LEXINGTON

## MS4 Stream Monitoring Program

### Technician Sampling Guide - Route K

Site: TB-S2 Stream: Town Branch Watershed: Town Branch

Coordinates: Parking Lat: 38.07156 Long: -84.55192 Sampling Lat: 38.07304 Long: -84.55236

Enter "Parking" Lat and Long into Google Maps to generate driving directions. Park at 687 Byrd Thurman Drive under the powerline. From there, walk down the mowed path below the powerline down to the stream.



If you have trouble accessing the site or collecting the sample, contact Ryan McGregor, Water Quality Sampling Lead, at (859) 977-2000 or (270) 206-5676. In his absence, contact Mac Hall, Data Manager at (859) 977-2000 or (859) 612-2434. A PDF copy of this guide, route KMZ, original image inserts, and other volunteer resources are available from [thirdrockconsultants.com/LFUCG-volunteer-links](http://thirdrockconsultants.com/LFUCG-volunteer-links).