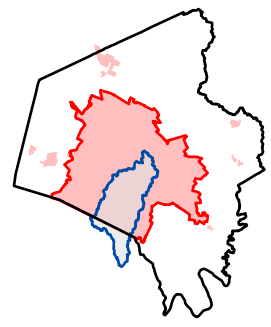







USGS The National Map Program, Geographic Name Dataset, National Land Cover Data, National Transportation Planning Product, Bureau TIGER/Line data; USFS Forest Inventory and Analysis of State HIU; NOAA N



Legend

-  Urban Service Boundary
-  Permit-Defined Urban Area
-  Fayette County Boundary
-  Watershed Boundary
-  Monitoring Site

Lexington-Fayette Urban County Government
Stream Monitoring Program
Sampling Route I



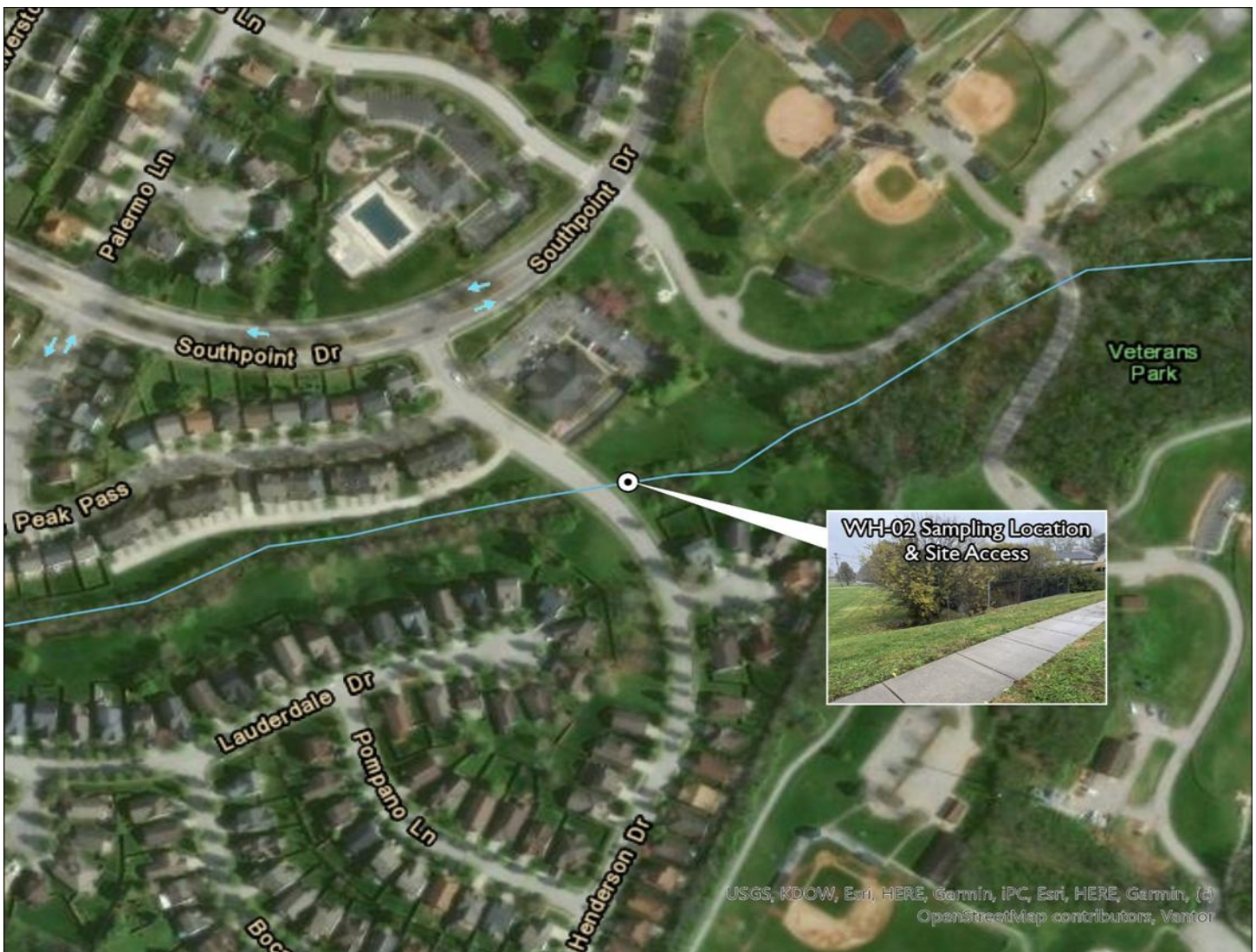
LEXINGTON

MS4 Stream Monitoring Program Volunteer Sampling Guide - Route I

Site: WH-02 Stream: UNT to West Hickman Creek Watershed: West Hickman Creek

Coordinates: Parking Lat: 37.95520 Long: -84.50630 Sampling Lat: 37.95520 Long: -84.50613

Enter "Parking" Lat and Long into Google Maps to generate driving directions. Park on Henderson Drive near Lexington Clinic located at 630 Southport Drive. From there, walk down the sidewalk to the chainlink fence. Walk down the mowed grass to the stream that is below the fence.



If you have trouble accessing the site or collecting the sample, contact Ryan McGregor, Water Quality Sampling Lead, at (859) 977-2000 or (270) 206-5676. In his absence, contact Mac Hall, Data Manager at (859) 977-2000 or (859) 612-2434. A PDF copy of this guide, route KMZ, original image inserts, and other volunteer resources are available from thirdrockconsultants.com/LFUCG-volunteer-links.



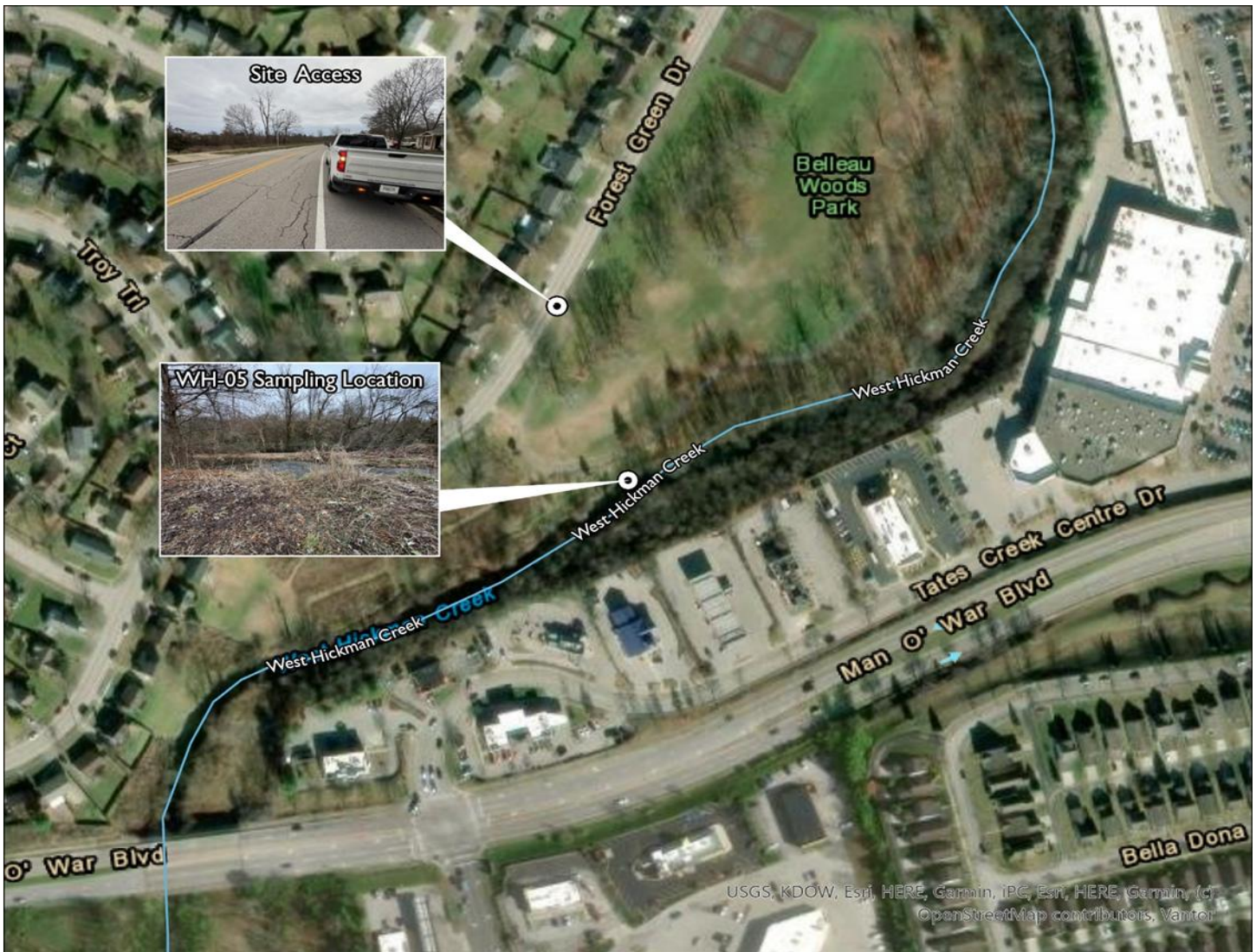
LEXINGTON

MS4 Stream Monitoring Program Volunteer Sampling Guide - Route I

Site: WH-05 Stream: West Hickman Creek Watershed: West Hickman Creek

Coordinates: Parking Lat: 37.97052 Long: -84.50189 Sampling Lat: 37.96971 Long: -84.50151

Enter "Parking" Lat and Long into Google Maps to generate driving directions. Park on the side of the road across from 3809 Forest Green Drive. From there, walk onto the paved Belleau Woods path and you will see the stream on the right.



If you have trouble accessing the site or collecting the sample, contact Ryan McGregor, Water Quality Sampling Lead, at (859) 977-2000 or (270) 206-5676. In his absence, contact Mac Hall, Data Manager at (859) 977-2000 or (859) 612-2434. A PDF copy of this guide, route KMZ, original image inserts, and other volunteer resources are available from thirdrockconsultants.com/LFUCG-volunteer-links.



LEXINGTON

MS4 Stream Monitoring Program Volunteer Sampling Guide - Route I

Site: WH-12 Stream: UNT to West Hickman Creek Watershed: West Hickman Creek

Coordinates: Parking Lat: 37.97397 Long: -84.48481 Sampling Lat: 37.97409 Long: -84.48481

Enter "Parking" Lat and Long into Google Maps to generate driving directions. Park at 3657 Crosby Drive. From there, walk down the mowed grass along the bushes directly to the stream.



If you have trouble accessing the site or collecting the sample, contact Ryan McGregor, Water Quality Sampling Lead, at (859) 977-2000 or (270) 206-5676. In his absence, contact Mac Hall, Data Manager at (859) 977-2000 or (859) 612-2434. A PDF copy of this guide, route KMZ, original image inserts, and other volunteer resources are available from thirdrockconsultants.com/LFUCG-volunteer-links.



LEXINGTON

MS4 Stream Monitoring Program Volunteer Sampling Guide - Route I

Site: WH-23 / WH-S3 Stream: West Hickman Creek Watershed: West Hickman Creek

Coordinates: Parking Lat: 37.93432 Long: -84.50155 Sampling Lat: 37.93443 Long: -84.50216

Enter "Parking" Lat and Long into Google Maps to generate driving directions. Park on W Hickman Plant Road outside of gate. Facing the gate, walk to the left towards the bridge and fence. Go through the gap in the fence to access the stream. Collect sample downstream of the bridge.



If you have trouble accessing the site or collecting the sample, contact Ryan McGregor, Water Quality Sampling Lead, at (859) 977-2000 or (270) 206-5676. In his absence, contact Mac Hall, Data Manager at (859) 977-2000 or (859) 612-2434. A PDF copy of this guide, route KMZ, original image inserts, and other volunteer resources are available from thirdrockconsultants.com/LFUCG-volunteer-links.