

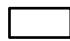




USGS The National Map
Program, Geographic Name
Dataset, National Land Co
National Transportation
Bureau TIGER/Line data; USFS R
of State HIU; NOAA N



Legend:

-  Urban Service Boundary
-  Permit-Defined Urban Area
-  Fayette County Boundary
-  Watershed Boundary
-  Monitoring Site

Lexington-Fayette Urban
County Government
Stream Monitoring Program
Sampling Route G



LEXINGTON

MS4 Stream Monitoring Program Volunteer Sampling Guide - Route G

Site: WR-02 Stream: UNT to Wolf Run Watershed: Wolf Run

Coordinates: Parking Lat: 38.05678 Long: -84.54149 Sampling Lat: 38.05750 Long: -84.54235

Enter "Parking" Lat and Long into Google Maps to generate driving directions. Park at Preston's Spring Park located at 1939 Dunkirk Drive. From there, walk down the mowed path into the wooded area. Follow the trail to the left once in the wooded area until you reach the stream. Water depth gauge is 30m downstream of the spring opening.



If you have trouble accessing the site or collecting the sample, contact Ryan McGregor, Water Quality Sampling Lead, at (859) 977-2000 or (270) 206-5676. In his absence, contact Mac Hall, Data Manager at (859) 977-2000 or (859) 612-2434. A PDF copy of this guide, route KMZ, original image inserts, and other volunteer resources are available from thirdrockconsultants.com/LFUCG-volunteer-links.



LEXINGTON

MS4 Stream Monitoring Program Volunteer Sampling Guide - Route G

Site: WR-03 Stream: Vaughns Branch Watershed: Wolf Run

Coordinates: Parking Lat: 38.05571 Long: -84.54951 Sampling Lat: 38.05510 Long: -84.55003

Enter "Parking" Lat and Long into Google Maps to generate driving directions. Park near the basketball court. From there, walk across the basketball court towards the bridge with black metal railing. Before you reach the bridge, take the path to the left and follow the path to the stream, collect sample at the concrete steps.



If you have trouble accessing the site or collecting the sample, contact Ryan McGregor, Water Quality Sampling Lead, at (859) 977-2000 or (270) 206-5676. In his absence, contact Mac Hall, Data Manager at (859) 977-2000 or (859) 612-2434. A PDF copy of this guide, route KMZ, original image inserts, and other volunteer resources are available from thirdrockconsultants.com/LFUCG-volunteer-links.



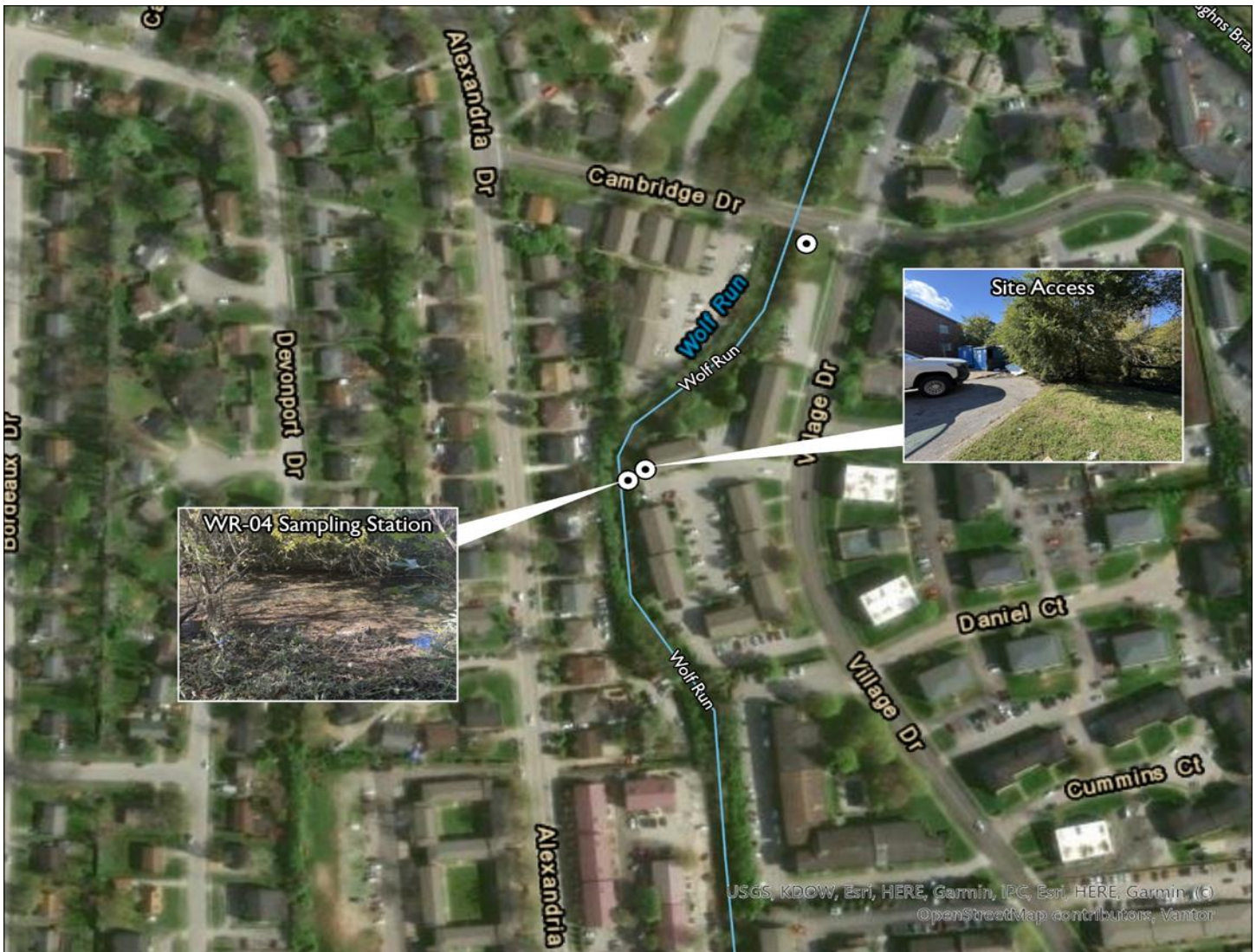
LEXINGTON

MS4 Stream Monitoring Program Volunteer Sampling Guide - Route G

Site: WR-04 Stream: Wolf Run Watershed: Wolf Run

Coordinates: Parking Lat: 38.05189 Long: -84.55186 Sampling Lat: 38.05185 Long: -84.55196

Enter "Parking" Lat and Long into Google Maps to generate driving directions. Park at 1261 Village Drive. From there, walk behind the dumpsters through a gap in the fence into the wooded area, which leads directly to the stream.



If you have trouble accessing the site or collecting the sample, contact Ryan McGregor, Water Quality Sampling Lead, at (859) 977-2000 or (270) 206-5676. In his absence, contact Mac Hall, Data Manager at (859) 977-2000 or (859) 612-2434. A PDF copy of this guide, route KMZ, original image inserts, and other volunteer resources are available from thirdrockconsultants.com/LFUCG-volunteer-links.



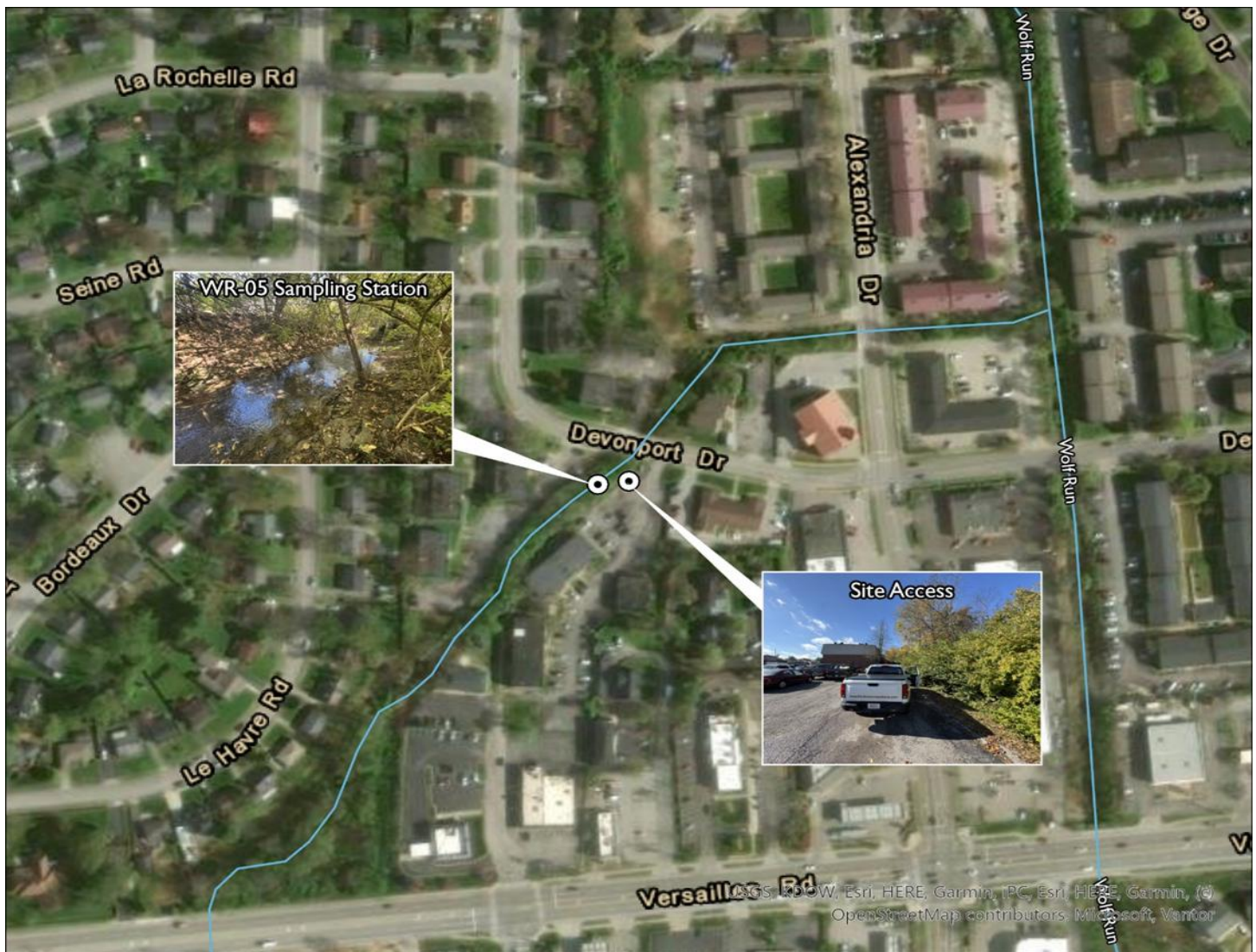
LEXINGTON

MS4 Stream Monitoring Program Volunteer Sampling Guide - Route G

Site: WR-05 Stream: UNT to Wolf Run Watershed: Wolf Run

Coordinates: Parking Lat: 38.04860 Long: -84.55365 Sampling Lat: 38.04859 Long: -84.55383

Enter "Parking" Lat and Long into Google Maps to generate driving directions. Park in the parking lot off of Devonport Drive. From there, walk into the thick brush adjacent to the parking lot. Once inside the brush, you will see the stream, water depth gauge is at the downstream end of the bridge.



If you have trouble accessing the site or collecting the sample, contact Ryan McGregor, Water Quality Sampling Lead, at (859) 977-2000 or (270) 206-5676. In his absence, contact Mac Hall, Data Manager at (859) 977-2000 or (859) 612-2434. A PDF copy of this guide, route KMZ, original image inserts, and other volunteer resources are available from thirdrockconsultants.com/LFUCG-volunteer-links.



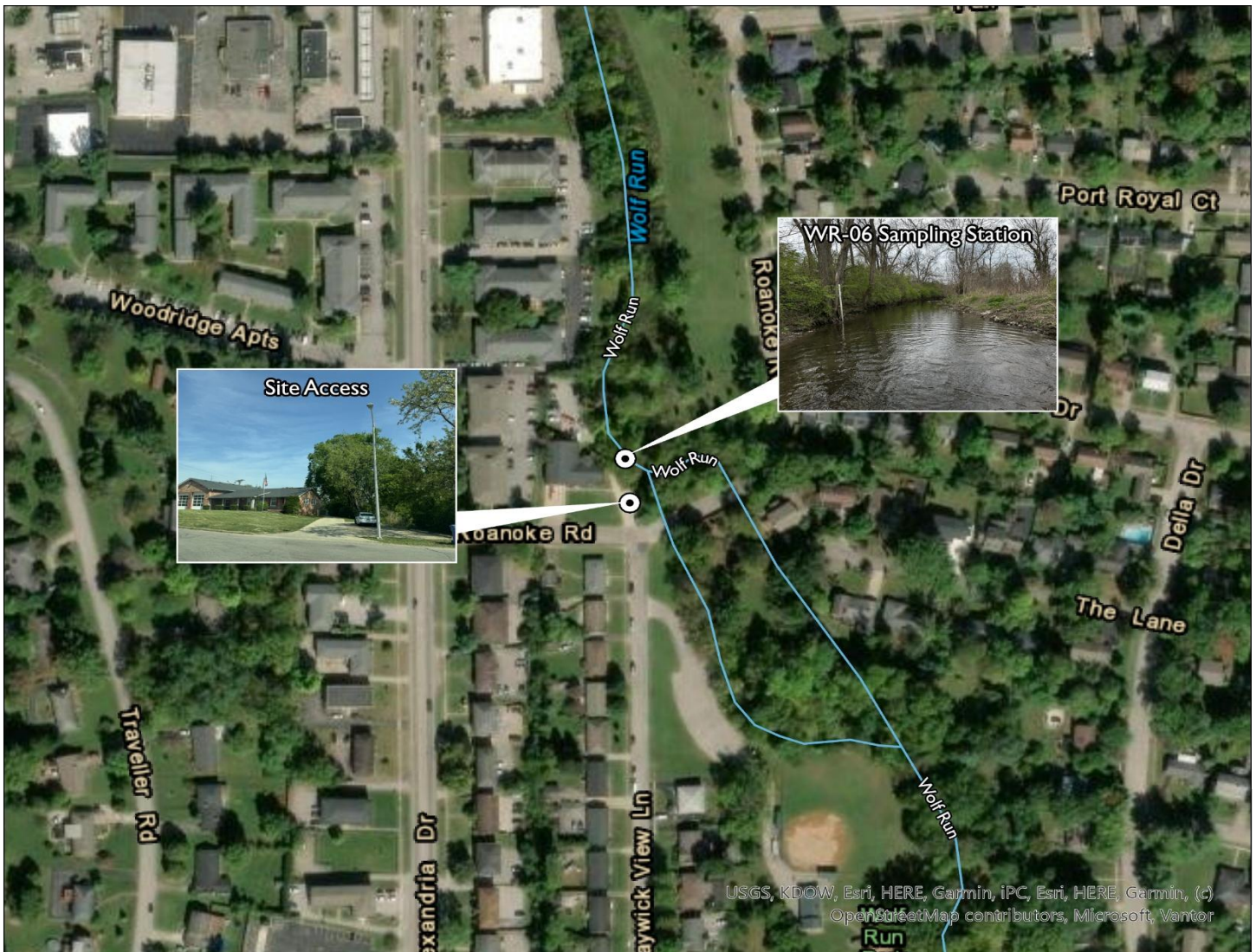
LEXINGTON

MS4 Stream Monitoring Program Volunteer Sampling Guide - Route G

Site: WR-06 Stream: Wolf Run Watershed: Wolf Run

Coordinates: Parking Lat: 38.04414 Long: -84.55075 Sampling Lat: 38.04435 Long: -84.55077

Enter "Parking" Lat and Long into Google Maps to generate driving directions. Park in the parking lot to the right of LFUCG Fire Department Station #14. The stream is immediately adjacent to the parking lot. Walk towards the wooded area adjacent to the parking lot and the stream is located just inside the wooded area.



If you have trouble accessing the site or collecting the sample, contact Ryan McGregor, Water Quality Sampling Lead, at (859) 977-2000 or (270) 206-5676. In his absence, contact Mac Hall, Data Manager at (859) 977-2000 or (859) 612-2434. A PDF copy of this guide, route KMZ, original image inserts, and other volunteer resources are available from thirdrockconsultants.com/LFUCG-volunteer-links.